



LABOUR FORCE

AUSTRALIA
PRELIMINARY

EMBARGO: 11:30AM (CANBERRA TIME) THURS 16 JAN 2003

DECEMBER KEY FIGURES

TREND

	Nov 2002	Dec 2002	monthly change
Employed persons ('000)	9 414.7	9 438.6	0.3 %
Unemployed persons ('000)	614.7	615.3	0.1 %
Unemployment rate (%)	6.1	6.1	0.0 pts
Participation rate (%)	63.8	63.9	0.1 pts

SEASONALLY ADJUSTED

	Nov 2002	Dec 2002	monthly change
Employed persons ('000)	9 423.6	9 475.6	52.1
Unemployed persons ('000)	616.8	628.4	11.7
Unemployment rate (%)	6.1	6.2	0.1 pts
Participation rate (%)	63.8	64.2	0.3 pts

DECEMBER KEY POINTS

TREND ESTIMATES

EMPLOYMENT

- increased to 9,438,600.

UNEMPLOYMENT

- increased to 615,300.

UNEMPLOYMENT RATE

- remained at 6.1%.

PARTICIPATION RATE

- increased to 63.9%.

SEASONALLY ADJUSTED ESTIMATES

EMPLOYMENT

- increased by 52,100 to 9,475,600. Full-time employment increased by 49,500 to 6,781,300 and part-time employment increased by 2,500 to 2,694,300.

UNEMPLOYMENT

- increased by 11,700 to 628,400. The number of persons looking for full-time work increased by 3,100 to 461,300 and the number of persons looking for part-time work increased by 8,500 to 167,100.

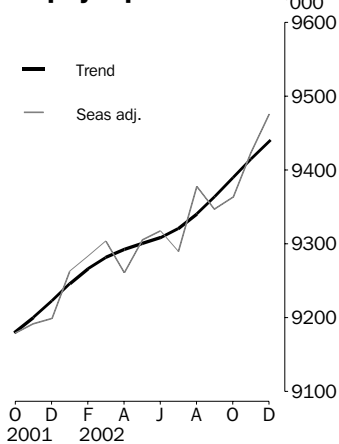
UNEMPLOYMENT RATE

- increased by 0.1 percentage point to 6.2%. The male rate increased by 0.2 percentage points to 6.3% and the female rate fell by 0.1 percentage point to 6.1%.
- NSW 6.1% (6.0% last month), Vic 5.8% (5.7%), Qld 7.1% (6.9%), SA 5.6% (6.1%), WA 6.4% (5.9%), Tas 9.5% (7.9%).

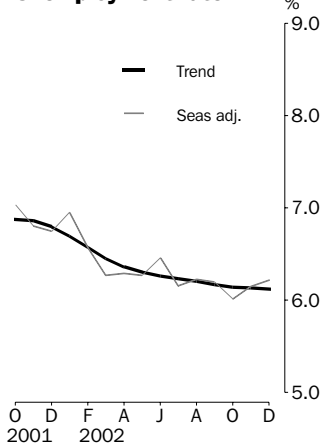
PARTICIPATION RATE

- increased by 0.3 percentage points to 64.2%.

Employed persons



Unemployment rate



- For further information about these and related statistics, contact Marjory Smith on 02 6252 6525, or the National Information and Referral Service on 1300 135 070.

FORTHCOMING ISSUES

<i>ISSUE</i>	<i>RELEASE DATE</i>
January 2003	13 February 2003
February 2003	13 March 2003
March 2003	10 April 2003
April 2003	08 May 2003
May 2003	12 June 2003
June 2003	10 July 2003



CHANGES THIS MONTH

Following each Census of Population and Housing, the ABS selects a new sample for the Labour Force Survey. This is done to ensure that the sample continues to accurately represent the distribution of the Australian population. A new sample has recently been selected based on the 2001 Census.

In order to reduce the potential impact of the change in sample on labour force statistics, the new sample is being introduced progressively, taking advantage of the existing rotation scheme. Using this scheme, the private dwelling sample in larger urban centres and less remote areas, representing just over four-fifths (82.1%) of the total sample, is being phased in over the period November 2002 to June 2003. Within these areas, one-eighth of the new sample is being introduced each month under existing sample rotation arrangements. The rest of the sample (in more remote, less populated areas and for non-private dwellings) was introduced in two stages, November and December 2002 (see paragraphs 13 to 15 of the Explanatory Notes). Detailed information about the new sample is provided in *Information Paper: Labour Force Survey Sample Design* (cat. no. 6269.0), released on 4 December 2002.



CHANGES TO LABOUR FORCE SURVEY PRODUCTS

Changes to the Labour Force Survey product set will be implemented this year. Details of the changes, including a guide to the new product set, are available in *Information Paper: Changes to Labour Force Survey Products* (cat. no. 6297.0), released on 13 December 2002, which is available free on the ABS website <<http://www.abs.gov.au>>.



SAMPLING ERRORS

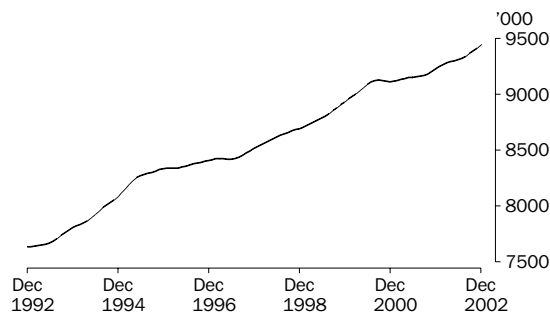
The estimates in this publication are based on a sample survey. Because the entire population is not enumerated, the published estimates and the movements derived from them are subject to sampling variability. Standard errors give a measure of this variability and appear on pages 31 and 32.

Dennis Trewin
Australian Statistician

PRINCIPAL LABOUR FORCE SERIES: Trend estimates

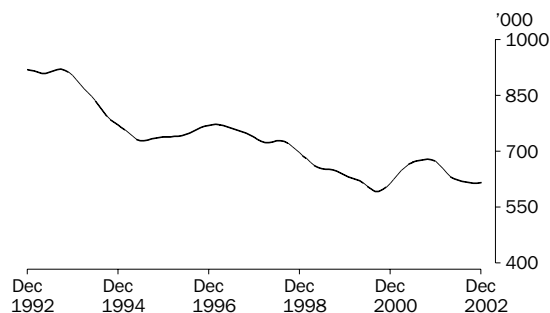
EMPLOYED PERSONS

The trend estimate of employed persons generally rose from a low of 7,634,000 in January 1993 to 9,126,300 in September 2000. The trend then fell to 9,113,100 in December 2000. The trend estimate has since risen steadily to stand at 9,438,600 in December 2002.



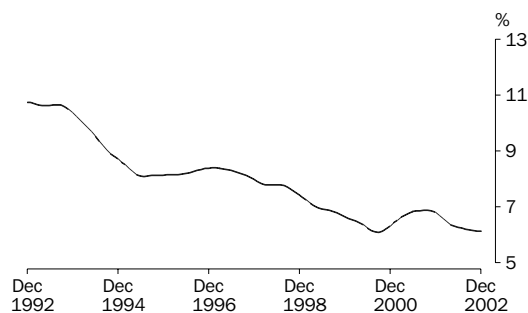
UNEMPLOYED PERSONS

The trend estimate of unemployed persons peaked at 920,600 in September 1993, before falling rapidly to 728,100 in July 1995. The trend then rose slowly, reaching 771,600 in February 1997, before falling to 591,800 in September 2000. The trend then rose to 678,000 in October 2001, before falling to stand at 615,300 in December 2002.



UNEMPLOYMENT RATE

From a high of 10.7% in December 1992, the trend unemployment rate remained steady until late 1993, before falling rapidly to 8.1% in July 1995. The trend then rose slowly until February 1997, before falling to 6.1% in September 2000. The trend rate then rose to 6.9% in October 2001, before falling to 6.1% in December 2002.

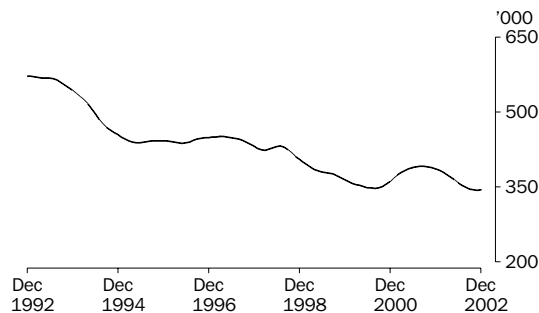


UNEMPLOYED PERSONS: Trend estimates

UNEMPLOYED MALES

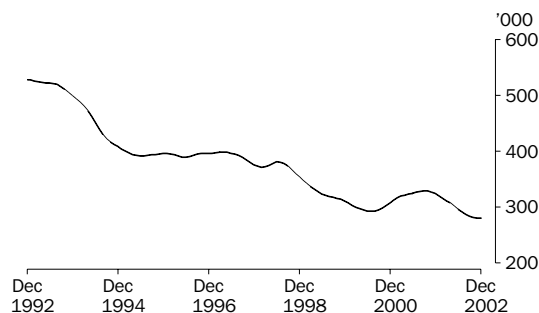
TOTAL

From a peak of 572,400 in December 1992, the trend estimate of unemployed males fell rapidly to 438,300 in May 1995. The trend estimate then remained relatively flat until July 1998, before falling to 346,900 in August 2000. The trend then rose to 391,300 in September 2001, before falling to stand at 343,700 in December 2002.



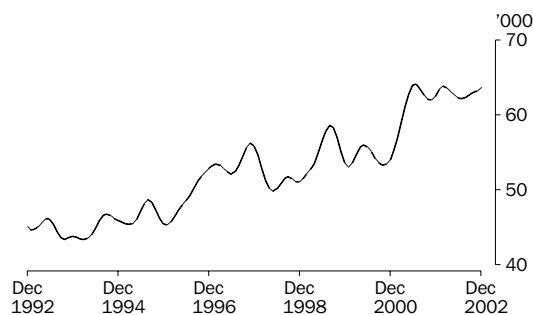
MALES LOOKING FOR FULL-TIME WORK

The trend estimate of males looking for full-time work fell rapidly from a high of 527,300 in December 1992 to 391,600 in June 1995. The trend then remained relatively flat until early 1997, before falling to 292,400 in July 2000. The trend estimate then rose to 328,600 in September 2001, before falling to stand at 280,100 in December 2002.



MALES LOOKING FOR PART-TIME WORK

The trend estimate of unemployed males looking for part-time work has increased significantly during the past decade. From a low of 43,300 in March 1994, the trend estimate rose to 64,100 in July 2001. The trend estimate has remained relatively steady since then, and stood at 63,600 in December 2002.

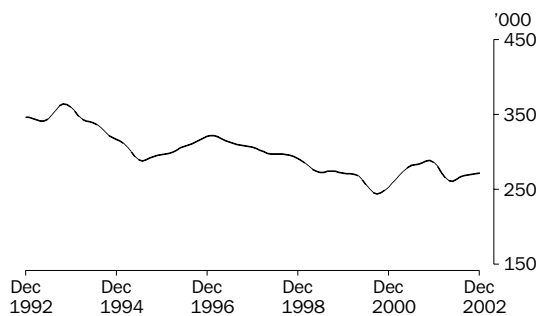


UNEMPLOYED PERSONS: Trend estimates

UNEMPLOYED FEMALES

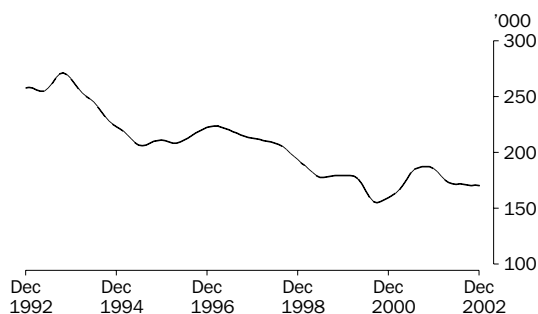
TOTAL

Apart from an increase through late 1995 and 1996, the trend estimate of unemployed females fell from a high of 364,200 in October 1993 to 243,800 in September 2000. The trend then rose to 288,600 in November 2001, before falling to 260,900 in May 2002. Recently the trend has risen, and stood at 271,600 in December 2002.



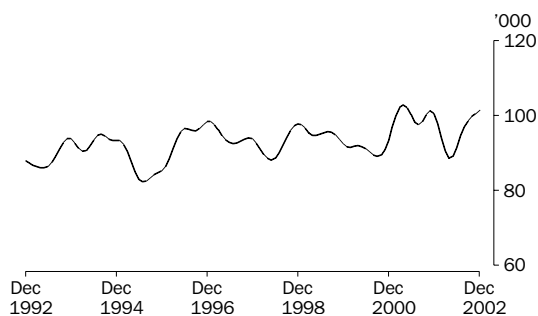
FEMALES LOOKING FOR FULL-TIME WORK

The trend estimate of females looking for full-time work fell from 271,300 in October 1993 to 205,800 in July 1995. The trend then rose to 223,700 in February 1997, before falling to 154,800 in September 2000. The trend estimate then rose to 187,300 in October 2001, before falling to stand at 170,300 in December 2002.



FEMALES LOOKING FOR PART-TIME WORK

The trend estimate of unemployed females looking for part-time work fluctuated between a low of 82,300 in July 1995 and a high of 102,800 in April 2001. The trend estimate then dropped to a low of 88,600 in April 2002, before rising to 101,300 in December 2002.



LABOUR FORCE STATUS (AGED 15 AND OVER): Original

Month	EMPLOYED.....			UNEMPLOYED.....			Labour force	Not in labour force	Civilian population aged 15 and over	Unemployment rate	Participation rate
	Full time	Part time	Total	Looking for f/t work	Looking for p/t work	Total					
	'000	'000	'000	'000	'000	'000	'000	'000	'000	%	%
MALES											
2001											
October	4 407.0	740.1	5 147.0	320.3	60.5	380.9	5 527.9	2 105.7	7 633.7	6.9	72.4
November	4 403.3	720.6	5 123.9	317.3	54.1	371.4	5 495.3	2 148.1	7 643.3	6.8	71.9
December	4 501.3	715.0	5 216.3	313.2	63.3	376.5	5 592.8	2 060.2	7 653.0	6.7	73.1
2002											
January	4 428.8	695.9	5 124.7	353.4	69.3	422.8	5 547.5	2 113.8	7 661.3	7.6	72.4
February	4 444.8	723.3	5 168.1	350.0	66.8	416.8	5 584.8	2 084.7	7 669.5	7.5	72.8
March	4 416.7	758.7	5 175.3	310.3	71.2	381.5	5 556.9	2 120.9	7 677.8	6.9	72.4
April	4 412.8	769.0	5 181.8	300.5	70.0	370.5	5 552.4	2 135.7	7 688.0	6.7	72.2
May	4 446.0	746.8	5 192.7	298.5	65.7	364.1	5 556.9	2 141.4	7 698.3	6.6	72.2
June	4 415.9	805.2	5 221.1	297.5	55.0	352.4	5 573.5	2 135.0	7 708.6	6.3	72.3
July	4 447.8	777.3	5 225.1	273.4	47.5	320.9	5 546.0	2 172.6	7 718.6	5.8	71.9
August	4 395.0	785.9	5 180.9	276.4	64.8	341.3	5 522.2	2 206.5	7 728.7	6.2	71.5
September	4 475.8	768.6	5 244.4	287.3	68.2	355.5	5 599.9	2 138.8	7 738.7	6.3	72.4
October	4 430.8	794.6	5 225.4	265.2	56.3	321.4	5 546.9	2 201.4	7 748.3	5.8	71.6
November	4 450.4	775.3	5 225.7	270.0	56.1	326.1	5 551.8	2 206.0	7 757.8	5.9	71.6
December	4 556.1	767.7	5 323.8	285.8	67.9	353.7	5 677.5	2 089.9	7 767.4	6.2	73.1
FEMALES											
2001											
October	2 232.2	1 825.4	4 057.6	183.1	96.1	279.2	4 336.8	3 508.5	7 845.2	6.4	55.3
November	2 229.4	1 837.1	4 066.5	170.1	87.9	258.1	4 324.6	3 529.8	7 854.3	6.0	55.1
December	2 263.2	1 834.8	4 098.1	185.5	99.5	285.0	4 383.0	3 480.4	7 863.5	6.5	55.7
2002											
January	2 249.0	1 750.1	3 999.1	208.5	96.0	304.5	4 303.7	3 567.7	7 871.4	7.1	54.7
February	2 236.6	1 826.2	4 062.9	204.5	104.9	309.5	4 372.3	3 507.0	7 879.3	7.1	55.5
March	2 239.1	1 853.1	4 092.2	178.3	102.1	280.4	4 372.6	3 514.6	7 887.2	6.4	55.4
April	2 196.6	1 880.7	4 077.2	171.5	88.1	259.6	4 336.8	3 560.7	7 897.5	6.0	54.9
May	2 217.5	1 873.7	4 091.2	166.2	96.0	262.1	4 353.3	3 554.5	7 907.8	6.0	55.1
June	2 196.8	1 921.6	4 118.4	181.5	90.5	272.0	4 390.4	3 527.8	7 918.2	6.2	55.4
July	2 250.8	1 872.1	4 122.9	150.8	86.1	236.9	4 359.8	3 568.9	7 928.7	5.4	55.0
August	2 248.3	1 880.8	4 129.1	164.7	90.1	254.8	4 383.9	3 555.2	7 939.1	5.8	55.2
September	2 304.5	1 898.5	4 203.0	167.4	105.5	273.0	4 475.9	3 473.7	7 949.7	6.1	56.3
October	2 260.9	1 904.2	4 165.2	150.9	97.5	248.4	4 413.6	3 545.8	7 959.4	5.6	55.5
November	2 276.2	1 918.8	4 195.0	166.8	83.7	250.5	4 445.5	3 523.7	7 969.2	5.6	55.8
December	2 354.8	1 912.9	4 267.7	175.0	95.5	270.5	4 538.2	3 440.8	7 979.0	6.0	56.9
PERSONS											
2001											
October	6 639.2	2 565.4	9 204.6	503.4	156.7	660.1	9 864.7	5 614.2	15 478.9	6.7	63.7
November	6 632.7	2 557.7	9 190.4	487.5	142.0	629.5	9 819.8	5 677.8	15 497.7	6.4	63.4
December	6 764.5	2 549.9	9 314.4	498.7	162.8	661.5	9 975.8	5 540.6	15 516.5	6.6	64.3
2002											
January	6 677.8	2 446.0	9 123.8	561.9	165.3	727.3	9 851.1	5 681.6	15 532.7	7.4	63.4
February	6 681.4	2 549.5	9 230.9	554.5	171.7	726.2	9 957.2	5 591.7	15 548.8	7.3	64.0
March	6 655.8	2 611.8	9 267.6	488.7	173.3	661.9	9 929.5	5 635.5	15 565.0	6.7	63.8
April	6 609.4	2 649.7	9 259.1	472.0	158.1	630.1	9 889.2	5 696.4	15 585.6	6.4	63.5
May	6 663.5	2 620.4	9 283.9	464.6	161.7	626.3	9 910.2	5 695.9	15 606.1	6.3	63.5
June	6 612.8	2 726.7	9 339.5	478.9	145.5	624.4	9 964.0	5 662.8	15 626.7	6.3	63.8
July	6 698.6	2 649.4	9 348.0	424.2	133.6	557.8	9 905.8	5 741.5	15 647.3	5.6	63.3
August	6 643.4	2 666.7	9 310.1	441.1	154.9	596.1	9 906.1	5 761.7	15 667.8	6.0	63.2
September	6 780.3	2 667.1	9 447.4	454.7	173.7	628.5	10 075.9	5 612.5	15 688.4	6.2	64.2
October	6 691.7	2 698.9	9 390.6	416.1	153.8	569.9	9 960.5	5 747.2	15 707.7	5.7	63.4
November	6 726.6	2 694.1	9 420.7	436.8	139.8	576.6	9 997.3	5 729.7	15 727.0	5.8	63.6
December	6 910.9	2 680.7	9 591.5	460.7	163.4	624.1	10 215.7	5 530.7	15 746.4	6.1	64.9

LABOUR FORCE STATUS (AGED 15 AND OVER): **Seasonally adjusted**

Month	EMPLOYED.....			UNEMPLOYED.....			Labour force '000	Unemp- loyment rate %	Partic- ipation rate %
	Full time	Part time	Total	Looking for f/t work	Looking for p/t work	Total			
	'000	'000	'000	'000	'000	'000			
MALES									
2001									
October	4 399.9	734.9	5 134.7	337.1	64.3	401.4	5 536.2	7.3	72.5
November	4 406.5	733.8	5 140.2	326.1	60.7	386.8	5 527.0	7.0	72.3
December	4 424.3	725.8	5 150.1	316.2	59.6	375.7	5 525.8	6.8	72.2
2002									
January	4 447.6	715.8	5 163.4	323.2	68.5	391.8	5 555.2	7.1	72.5
February	4 431.7	752.3	5 184.0	320.9	61.6	382.4	5 566.4	6.9	72.6
March	4 440.6	755.0	5 195.6	306.3	62.5	368.8	5 564.4	6.6	72.5
April	4 429.6	751.7	5 181.4	304.8	66.3	371.0	5 552.4	6.7	72.2
May	4 473.7	733.0	5 206.7	301.9	64.2	366.1	5 572.8	6.6	72.4
June	4 436.0	777.2	5 213.2	304.2	59.6	363.8	5 577.0	6.5	72.3
July	4 418.8	780.2	5 199.0	289.7	54.2	343.9	5 542.9	6.2	71.8
August	4 439.3	781.7	5 220.9	281.9	72.4	354.3	5 575.2	6.4	72.1
September	4 448.0	762.2	5 210.2	284.0	62.2	346.3	5 556.4	6.2	71.8
October	4 423.6	788.7	5 212.4	278.6	59.9	338.5	5 550.8	6.1	71.6
November	4 453.6	790.0	5 243.6	277.6	63.0	340.6	5 584.2	6.1	72.0
December	4 478.1	779.9	5 258.1	288.5	64.2	352.6	5 610.7	6.3	72.2
FEMALES									
2001									
October	2 223.2	1 821.5	4 044.6	190.9	101.2	292.2	4 336.8	6.7	55.3
November	2 231.3	1 820.2	4 051.5	184.0	100.1	284.1	4 335.6	6.6	55.2
December	2 212.9	1 836.1	4 048.9	182.3	107.3	289.5	4 338.5	6.7	55.2
2002									
January	2 239.4	1 859.9	4 099.3	195.3	105.4	300.7	4 400.1	6.8	55.9
February	2 232.4	1 866.7	4 099.1	180.7	89.4	270.1	4 369.2	6.2	55.5
March	2 260.0	1 848.6	4 108.7	167.8	85.7	253.5	4 362.2	5.8	55.3
April	2 215.8	1 863.6	4 079.4	168.6	82.0	250.6	4 330.0	5.8	54.8
May	2 247.0	1 851.5	4 098.5	162.6	93.8	256.4	4 354.8	5.9	55.1
June	2 216.8	1 887.7	4 104.6	188.1	92.0	280.1	4 384.7	6.4	55.4
July	2 216.3	1 874.3	4 090.5	167.6	97.9	265.4	4 356.0	6.1	54.9
August	2 283.5	1 873.6	4 157.1	175.9	92.6	268.4	4 425.5	6.1	55.7
September	2 286.4	1 850.7	4 137.1	169.1	101.7	270.9	4 408.0	6.1	55.4
October	2 250.9	1 899.9	4 150.8	157.4	102.8	260.2	4 410.9	5.9	55.4
November	2 278.2	1 901.8	4 180.0	180.6	95.5	276.2	4 456.1	6.2	55.9
December	2 303.2	1 914.4	4 217.6	172.9	103.0	275.8	4 493.4	6.1	56.3
PERSONS									
2001									
October	6 623.0	2 556.4	9 179.4	528.0	165.6	693.6	9 873.0	7.0	63.8
November	6 637.8	2 554.0	9 191.8	510.1	160.8	670.9	9 862.7	6.8	63.6
December	6 637.2	2 561.8	9 199.0	498.4	166.9	665.3	9 864.3	6.7	63.6
2002									
January	6 687.0	2 575.7	9 262.7	518.6	174.0	692.5	9 955.2	7.0	64.1
February	6 664.1	2 619.0	9 283.1	501.6	150.9	652.5	9 935.7	6.6	63.9
March	6 700.6	2 603.7	9 304.3	474.1	148.2	622.3	9 926.6	6.3	63.8
April	6 645.5	2 615.3	9 260.8	473.4	148.2	621.6	9 882.4	6.3	63.4
May	6 720.7	2 584.4	9 305.2	464.5	158.0	622.5	9 927.7	6.3	63.6
June	6 652.9	2 664.9	9 317.8	492.3	151.6	643.9	9 961.7	6.5	63.7
July	6 635.0	2 654.4	9 289.5	457.3	152.0	609.4	9 898.8	6.2	63.3
August	6 722.7	2 655.3	9 378.0	457.7	165.0	622.7	10 000.7	6.2	63.8
September	6 734.4	2 612.9	9 347.3	453.2	163.9	617.1	9 964.4	6.2	63.5
October	6 674.5	2 688.6	9 363.1	436.0	162.7	598.6	9 961.7	6.0	63.4
November	6 731.8	2 691.8	9 423.6	458.2	158.6	616.8	10 040.3	6.1	63.8
December	6 781.3	2 694.3	9 475.6	461.3	167.1	628.4	10 104.1	6.2	64.2

LABOUR FORCE STATUS (AGED 15 AND OVER): Trend(a)

Month	EMPLOYED.....			UNEMPLOYED.....			Labour force	Unemp- loyment rate	Partic- ipation rate
	Full time	Part time	Total	Looking for f/t work	Looking for p/t work	Total			
	'000	'000	'000	'000	'000	'000	'000	%	%
MALES									
2001									
October	4 401.6	731.6	5 133.2	328.4	62.1	390.5	5 523.7	7.1	72.4
November	4 413.6	729.8	5 143.3	327.0	62.0	389.0	5 532.3	7.0	72.4
December	4 423.9	730.3	5 154.2	323.9	62.5	386.4	5 540.6	7.0	72.4
2002									
January	4 432.3	733.3	5 165.6	319.9	63.4	383.3	5 549.0	6.9	72.4
February	4 438.7	738.3	5 177.0	315.6	63.8	379.4	5 556.4	6.8	72.4
March	4 442.6	744.6	5 187.2	311.3	63.6	374.9	5 562.1	6.7	72.4
April	4 444.0	751.6	5 195.6	306.9	63.1	370.0	5 565.5	6.6	72.4
May	4 442.7	758.7	5 201.3	302.0	62.6	364.7	5 566.0	6.6	72.3
June	4 439.6	765.1	5 204.8	296.5	62.2	358.7	5 563.5	6.4	72.2
July	4 437.1	770.7	5 207.8	291.2	62.2	353.4	5 561.1	6.4	72.0
August	4 436.5	775.7	5 212.2	286.9	62.4	349.2	5 561.5	6.3	72.0
September	4 438.9	779.7	5 218.6	283.5	62.6	346.1	5 564.7	6.2	71.9
October	4 444.1	782.3	5 226.4	281.3	63.0	344.3	5 570.7	6.2	71.9
November	4 450.5	784.3	5 234.7	280.3	63.2	343.5	5 578.2	6.2	71.9
December	4 459.4	783.8	5 243.2	280.1	63.6	343.7	5 586.8	6.2	72.0
FEMALES									
2001									
October	2 232.6	1 815.3	4 047.9	187.3	100.2	287.5	4 335.3	6.6	55.3
November	2 231.9	1 825.0	4 056.8	187.3	101.3	288.6	4 345.4	6.6	55.3
December	2 232.2	1 836.0	4 068.2	185.8	100.6	286.4	4 354.6	6.6	55.4
2002									
January	2 233.2	1 847.0	4 080.2	182.8	97.8	280.6	4 360.8	6.4	55.4
February	2 233.7	1 855.6	4 089.2	178.9	94.0	272.9	4 362.1	6.3	55.4
March	2 233.4	1 861.1	4 094.6	175.1	90.5	265.7	4 360.3	6.1	55.3
April	2 232.9	1 863.9	4 096.9	172.8	88.6	261.4	4 358.3	6.0	55.2
May	2 233.2	1 865.9	4 099.2	171.7	89.1	260.9	4 360.0	6.0	55.1
June	2 236.3	1 867.3	4 103.6	171.4	91.5	262.9	4 366.5	6.0	55.1
July	2 243.2	1 870.0	4 113.2	171.6	94.6	266.2	4 379.5	6.1	55.2
August	2 253.7	1 874.5	4 128.2	171.5	97.1	268.6	4 396.8	6.1	55.4
September	2 265.1	1 880.5	4 145.5	170.9	98.6	269.4	4 415.0	6.1	55.5
October	2 275.3	1 887.9	4 163.2	170.4	99.7	270.1	4 433.3	6.1	55.7
November	2 283.7	1 896.3	4 180.0	170.6	100.5	271.1	4 451.1	6.1	55.9
December	2 292.3	1 903.1	4 195.4	170.3	101.3	271.6	4 467.0	6.1	56.0
PERSONS									
2001									
October	6 634.2	2 546.9	9 181.1	515.7	162.3	678.0	9 859.1	6.9	63.7
November	6 645.4	2 554.7	9 200.2	514.2	163.3	677.6	9 877.7	6.9	63.7
December	6 656.1	2 566.3	9 222.4	509.7	163.1	672.8	9 895.2	6.8	63.8
2002									
January	6 665.5	2 580.4	9 245.9	502.7	161.2	663.9	9 909.8	6.7	63.8
February	6 672.3	2 593.9	9 266.2	494.5	157.8	652.3	9 918.5	6.6	63.8
March	6 676.1	2 605.8	9 281.8	486.4	154.1	640.6	9 922.4	6.5	63.7
April	6 676.9	2 615.5	9 292.4	479.7	151.8	631.4	9 923.9	6.4	63.7
May	6 675.9	2 624.6	9 300.5	473.8	151.8	625.6	9 926.0	6.3	63.6
June	6 675.9	2 632.4	9 308.4	467.9	153.7	621.6	9 930.0	6.3	63.5
July	6 680.3	2 640.7	9 321.0	462.8	156.8	619.6	9 940.6	6.2	63.5
August	6 690.2	2 650.2	9 340.5	458.4	159.4	617.8	9 958.3	6.2	63.6
September	6 704.0	2 660.2	9 364.2	454.3	161.2	615.6	9 979.7	6.2	63.6
October	6 719.4	2 670.2	9 389.6	451.8	162.7	614.4	10 004.0	6.1	63.7
November	6 734.1	2 680.6	9 414.7	450.9	163.7	614.7	10 029.4	6.1	63.8
December	6 751.7	2 686.8	9 438.6	450.4	164.9	615.3	10 053.9	6.1	63.9

(a) Trend estimates for June 2002 to November 2002 have been revised.

UNEMPLOYED PERSONS: Original

Month	NUMBER OF UNEMPLOYED PERSONS.....					UNEMPLOYMENT RATE.....					UNEMPLOYMENT TO POPULATION RATIO	
	Aged 15-19 looking for f/t work	Aged 20 and over looking for f/t work	Total looking for f/t work	Looking for p/t work	Total	Aged 15-19 looking for f/t work	Aged 20 and over looking for f/t work	Total looking for f/t work	Looking for p/t work	Total	Aged 15-19 looking for f/t work	Aged 20 and over looking for f/t work
	'000	'000	'000	'000	'000	%	%	%	%	%	%	%
MALES												
2001												
October	43.1	277.3	320.3	60.5	380.9	23.3	6.1	6.8	7.6	6.9	6.2	4.0
November	42.3	275.0	317.3	54.1	371.4	24.6	6.0	6.7	7.0	6.8	6.1	4.0
December	49.5	263.7	313.2	63.3	376.5	23.4	5.7	6.5	8.1	6.7	7.1	3.8
2002												
January	49.5	303.9	353.4	69.3	422.8	24.5	6.6	7.4	9.1	7.6	7.1	4.4
February	50.7	299.3	350.0	66.8	416.8	25.5	6.5	7.3	8.5	7.5	7.3	4.3
March	37.2	273.1	310.3	71.2	381.5	20.2	6.0	6.6	8.6	6.9	5.3	3.9
April	37.9	262.6	300.5	70.0	370.5	20.9	5.8	6.4	8.3	6.7	5.4	3.8
May	34.5	263.9	298.5	65.7	364.1	19.7	5.8	6.3	8.1	6.6	4.9	3.8
June	33.1	264.4	297.5	55.0	352.4	18.9	5.8	6.3	6.4	6.3	4.7	3.8
July	31.1	242.3	273.4	47.5	320.9	17.1	5.3	5.8	5.8	5.8	4.5	3.5
August	30.7	245.7	276.4	64.8	341.3	18.7	5.5	5.9	7.6	6.2	4.4	3.5
September	29.8	257.5	287.3	68.2	355.5	17.8	5.6	6.0	8.2	6.3	4.3	3.7
October	33.7	231.5	265.2	56.3	321.4	19.7	5.1	5.6	6.6	5.8	4.8	3.3
November	34.6	235.4	270.0	56.1	326.1	20.9	5.2	5.7	6.7	5.9	4.9	3.3
December	44.7	241.0	285.8	67.9	353.7	21.7	5.2	5.9	8.1	6.2	6.4	3.4
FEMALES												
2001												
October	29.1	154.0	183.1	96.1	279.2	25.6	6.7	7.6	5.0	6.4	4.4	2.1
November	28.6	141.5	170.1	87.9	258.1	25.5	6.2	7.1	4.6	6.0	4.3	2.0
December	34.6	150.9	185.5	99.5	285.0	27.3	6.5	7.6	5.1	6.5	5.2	2.1
2002												
January	37.7	170.8	208.5	96.0	304.5	28.4	7.3	8.5	5.2	7.1	5.7	2.4
February	31.3	173.2	204.5	104.9	309.5	26.9	7.4	8.4	5.4	7.1	4.7	2.4
March	30.7	147.6	178.3	102.1	280.4	29.5	6.4	7.4	5.2	6.4	4.6	2.0
April	25.7	145.7	171.5	88.1	259.6	26.0	6.4	7.2	4.5	6.0	3.9	2.0
May	28.7	137.4	166.2	96.0	262.1	27.6	6.0	7.0	4.9	6.0	4.3	1.9
June	30.5	150.9	181.5	90.5	272.0	29.3	6.6	7.6	4.5	6.2	4.6	2.1
July	22.0	128.8	150.8	86.1	236.9	21.0	5.6	6.3	4.4	5.4	3.3	1.8
August	24.1	140.6	164.7	90.1	254.8	24.8	6.1	6.8	4.6	5.8	3.6	1.9
September	24.4	143.1	167.4	105.5	273.0	24.7	6.0	6.8	5.3	6.1	3.6	2.0
October	23.9	127.0	150.9	97.5	248.4	23.8	5.5	6.3	4.9	5.6	3.6	1.7
November	25.7	141.1	166.8	83.7	250.5	24.6	6.0	6.8	4.2	5.6	3.8	1.9
December	28.1	146.9	175.0	95.5	270.5	23.3	6.1	6.9	4.8	6.0	4.2	2.0
PERSONS												
2001												
October	72.1	431.3	503.4	156.7	660.1	24.2	6.3	7.0	5.8	6.7	5.3	3.1
November	70.9	416.5	487.5	142.0	629.5	24.9	6.1	6.8	5.3	6.4	5.2	2.9
December	84.1	414.6	498.7	162.8	661.5	24.9	6.0	6.9	6.0	6.6	6.2	2.9
2002												
January	87.2	474.7	561.9	165.3	727.3	26.1	6.9	7.8	6.3	7.4	6.4	3.4
February	82.0	472.5	554.5	171.7	726.2	26.0	6.8	7.7	6.3	7.3	6.0	3.3
March	67.9	420.8	488.7	173.3	661.9	23.6	6.1	6.8	6.2	6.7	5.0	3.0
April	63.6	408.3	472.0	158.1	630.1	22.7	6.0	6.7	5.6	6.4	4.7	2.9
May	63.3	401.4	464.6	161.7	626.3	22.6	5.9	6.5	5.8	6.3	4.6	2.8
June	63.6	415.3	478.9	145.5	624.4	22.8	6.1	6.8	5.1	6.3	4.7	2.9
July	53.1	371.1	424.2	133.6	557.8	18.6	5.4	6.0	4.8	5.6	3.9	2.6
August	54.8	386.4	441.1	154.9	596.1	20.9	5.7	6.2	5.5	6.0	4.0	2.7
September	54.2	400.6	454.7	173.7	628.5	20.3	5.7	6.3	6.1	6.2	4.0	2.8
October	57.6	358.5	416.1	153.8	569.9	21.2	5.2	5.9	5.4	5.7	4.2	2.5
November	60.3	376.5	436.8	139.8	576.6	22.3	5.5	6.1	4.9	5.8	4.4	2.6
December	72.8	387.9	460.7	163.4	624.1	22.3	5.5	6.2	5.7	6.1	5.3	2.7

UNEMPLOYED PERSONS: Seasonally adjusted

Month	NUMBER OF UNEMPLOYED PERSONS....					UNEMPLOYMENT RATE.....					UNEMPLOYMENT TO POPULATION RATIO	
	Aged 15-19 looking for f/t work '000	Aged 20 and over looking for f/t work '000	Total looking for f/t work '000	Looking for p/t work '000	Total '000	Aged 15-19 looking for f/t work %	Aged 20 and over looking for f/t work %	Total looking for f/t work %	Looking for p/t work %	Total %	Aged 15-19 looking for f/t work %	Aged 20 and over looking for f/t work %
MALES												
2001												
October	49.4	287.7	337.1	64.3	401.4	25.2	6.3	7.1	8.0	7.3	7.1	4.1
November	44.5	281.6	326.1	60.7	386.8	24.6	6.2	6.9	7.6	7.0	6.4	4.1
December	41.4	274.8	316.2	59.6	375.7	22.1	6.0	6.7	7.6	6.8	5.9	4.0
2002												
January	39.3	283.9	323.2	68.5	391.8	21.6	6.2	6.8	8.7	7.1	5.6	4.1
February	45.5	275.3	320.9	61.6	382.4	24.5	6.0	6.8	7.6	6.9	6.5	3.9
March	36.2	270.0	306.3	62.5	368.8	19.3	5.9	6.5	7.6	6.6	5.2	3.9
April	38.4	266.3	304.8	66.3	371.0	21.1	5.9	6.4	8.1	6.7	5.5	3.8
May	36.5	265.4	301.9	64.2	366.1	19.8	5.8	6.3	8.1	6.6	5.2	3.8
June	34.2	270.0	304.2	59.6	363.8	18.8	5.9	6.4	7.1	6.5	4.9	3.9
July	34.7	255.0	289.7	54.2	343.9	19.5	5.6	6.2	6.5	6.2	5.0	3.6
August	35.6	246.3	281.9	72.4	354.3	20.1	5.4	6.0	8.5	6.4	5.1	3.5
September	32.4	251.6	284.0	62.2	346.3	18.7	5.5	6.0	7.5	6.2	4.6	3.6
October	38.7	239.9	278.6	59.9	338.5	21.4	5.3	5.9	7.1	6.1	5.5	3.4
November	36.3	241.2	277.6	63.0	340.6	20.9	5.3	5.9	7.4	6.1	5.2	3.4
December	37.4	251.1	288.5	64.2	352.6	20.4	5.5	6.1	7.6	6.3	5.3	3.6
FEMALES												
2001												
October	32.6	158.4	190.9	101.2	292.2	27.2	6.9	7.9	5.3	6.7	4.9	2.2
November	30.6	153.4	184.0	100.1	284.1	26.1	6.7	7.6	5.2	6.6	4.6	2.1
December	27.2	155.0	182.3	107.3	289.5	25.0	6.8	7.6	5.5	6.7	4.1	2.2
2002												
January	32.4	162.9	195.3	105.4	300.7	28.5	7.0	8.0	5.4	6.8	4.9	2.3
February	27.2	153.5	180.7	89.4	270.1	25.6	6.7	7.5	4.6	6.2	4.1	2.1
March	30.6	137.2	167.8	85.7	253.5	28.4	5.9	6.9	4.4	5.8	4.6	1.9
April	26.0	142.6	168.6	82.0	250.6	25.9	6.2	7.1	4.2	5.8	3.9	2.0
May	27.6	134.9	162.6	93.8	256.4	25.6	5.9	6.7	4.8	5.9	4.1	1.9
June	34.3	153.8	188.1	92.0	280.1	30.4	6.7	7.8	4.6	6.4	5.1	2.1
July	24.0	143.6	167.6	97.9	265.4	23.1	6.3	7.0	5.0	6.1	3.6	2.0
August	27.9	147.9	175.9	92.6	268.4	25.9	6.3	7.2	4.7	6.1	4.2	2.0
September	27.3	141.9	169.1	101.7	270.9	25.7	6.0	6.9	5.2	6.1	4.1	1.9
October	26.8	130.6	157.4	102.8	260.2	25.3	5.7	6.5	5.1	5.9	4.0	1.8
November	27.6	153.1	180.6	95.5	276.2	25.3	6.5	7.3	4.8	6.2	4.1	2.1
December	22.1	150.8	172.9	103.0	275.8	21.2	6.4	7.0	5.1	6.1	3.3	2.1
PERSONS												
2001												
October	81.9	446.1	528.0	165.6	693.6	25.9	6.5	7.4	6.1	7.0	6.0	3.2
November	75.1	434.9	510.1	160.8	670.9	25.2	6.3	7.1	5.9	6.8	5.5	3.1
December	68.6	429.8	498.4	166.9	665.3	23.2	6.3	7.0	6.1	6.7	5.0	3.0
2002												
January	71.7	446.8	518.6	174.0	692.5	24.3	6.5	7.2	6.3	7.0	5.3	3.2
February	72.8	428.8	501.6	150.9	652.5	24.9	6.2	7.0	5.4	6.6	5.3	3.0
March	66.9	407.2	474.1	148.2	622.3	22.6	5.9	6.6	5.4	6.3	4.9	2.9
April	64.5	408.9	473.4	148.2	621.6	22.8	6.0	6.6	5.4	6.3	4.7	2.9
May	64.1	400.4	464.5	158.0	622.5	21.9	5.8	6.5	5.8	6.3	4.7	2.8
June	68.5	423.8	492.3	151.6	643.9	23.3	6.2	6.9	5.4	6.5	5.0	3.0
July	58.7	398.6	457.3	152.0	609.4	20.8	5.9	6.4	5.4	6.2	4.3	2.8
August	63.5	394.2	457.7	165.0	622.7	22.3	5.7	6.4	5.9	6.2	4.6	2.8
September	59.7	393.5	453.2	163.9	617.1	21.4	5.7	6.3	5.9	6.2	4.4	2.7
October	65.5	370.5	436.0	162.7	598.6	22.8	5.4	6.1	5.7	6.0	4.8	2.6
November	63.9	394.3	458.2	158.6	616.8	22.6	5.7	6.4	5.6	6.1	4.7	2.7
December	59.5	401.9	461.3	167.1	628.4	20.7	5.8	6.4	5.8	6.2	4.3	2.8

UNEMPLOYED PERSONS: Trend(a)

Month	NUMBER OF UNEMPLOYED PERSONS.....					UNEMPLOYMENT RATE.....					UNEMPLOYMENT TO POPULATION RATIO	
	Aged 15-19 looking for f/t work	Aged 20 and over looking for f/t work	Total looking for f/t work	Looking for p/t work	Total	Aged 15-19 looking for f/t work	Aged 20 and over looking for f/t work	Total looking for f/t work	Looking for p/t work	Total	Aged 15-19 looking for f/t work	Aged 20 and over looking for f/t work
	'000	'000	'000	'000	'000	%	%	%	%	%	%	%
MALES												
2001												
October	45.6	282.8	328.4	62.1	390.5	24.0	6.2	6.9	7.8	7.1	6.5	4.1
November	44.9	282.1	327.0	62.0	389.0	23.9	6.2	6.9	7.8	7.0	6.4	4.1
December	43.7	280.3	323.9	62.5	386.4	23.5	6.1	6.8	7.9	7.0	6.3	4.0
2002												
January	42.1	277.8	319.9	63.4	383.3	22.7	6.1	6.7	8.0	6.9	6.0	4.0
February	40.3	275.3	315.6	63.8	379.4	21.8	6.0	6.6	8.0	6.8	5.8	3.9
March	38.9	272.4	311.3	63.6	374.9	21.1	6.0	6.5	7.9	6.7	5.6	3.9
April	37.6	269.3	306.9	63.1	370.0	20.4	5.9	6.5	7.7	6.6	5.4	3.9
May	36.3	265.8	302.0	62.6	364.7	19.8	5.8	6.4	7.6	6.6	5.2	3.8
June	35.2	261.3	296.5	62.2	358.7	19.5	5.7	6.3	7.5	6.4	5.0	3.7
July	34.7	256.5	291.2	62.2	353.4	19.4	5.6	6.2	7.5	6.4	5.0	3.7
August	34.9	252.0	286.9	62.4	349.2	19.7	5.5	6.1	7.4	6.3	5.0	3.6
September	35.4	248.1	283.5	62.6	346.1	20.0	5.5	6.0	7.4	6.2	5.1	3.5
October	35.9	245.4	281.3	63.0	344.3	20.3	5.4	6.0	7.4	6.2	5.1	3.5
November	36.6	243.7	280.3	63.2	343.5	20.6	5.4	5.9	7.5	6.2	5.2	3.5
December	37.2	242.9	280.1	63.6	343.7	20.8	5.3	5.9	7.5	6.2	5.3	3.4
FEMALES												
2001												
October	31.0	156.3	187.3	100.2	287.5	26.5	6.8	7.7	5.2	6.6	4.7	2.2
November	30.5	156.8	187.3	101.3	288.6	26.4	6.8	7.7	5.3	6.6	4.6	2.2
December	29.9	155.9	185.8	100.6	286.4	26.4	6.8	7.7	5.2	6.6	4.5	2.2
2002												
January	29.5	153.3	182.8	97.8	280.6	26.7	6.7	7.6	5.0	6.4	4.4	2.1
February	29.1	149.8	178.9	94.0	272.9	26.9	6.5	7.4	4.8	6.3	4.4	2.1
March	28.8	146.3	175.1	90.5	265.7	27.0	6.4	7.3	4.6	6.1	4.3	2.0
April	28.7	144.1	172.8	88.6	261.4	27.0	6.3	7.2	4.5	6.0	4.3	2.0
May	28.6	143.1	171.7	89.1	260.9	26.9	6.2	7.1	4.6	6.0	4.3	2.0
June	28.4	143.0	171.4	91.5	262.9	26.6	6.2	7.1	4.7	6.0	4.3	2.0
July	28.2	143.4	171.6	94.6	266.2	26.3	6.2	7.1	4.8	6.1	4.2	2.0
August	27.7	143.8	171.5	97.1	268.6	25.9	6.2	7.1	4.9	6.1	4.1	2.0
September	27.1	143.8	170.9	98.6	269.4	25.3	6.2	7.0	5.0	6.1	4.1	2.0
October	26.3	144.1	170.4	99.7	270.1	24.7	6.2	7.0	5.0	6.1	3.9	2.0
November	25.5	145.1	170.6	100.5	271.1	24.1	6.2	7.0	5.0	6.1	3.8	2.0
December	24.6	145.7	170.3	101.3	271.6	23.3	6.2	6.9	5.1	6.1	3.7	2.0
PERSONS												
2001												
October	76.6	439.1	515.7	162.3	678.0	25.0	6.4	7.2	6.0	6.9	5.6	3.1
November	75.4	438.8	514.2	163.3	677.6	24.9	6.4	7.2	6.0	6.9	5.5	3.1
December	73.6	436.1	509.7	163.1	672.8	24.6	6.4	7.1	6.0	6.8	5.4	3.1
2002												
January	71.5	431.2	502.7	161.2	663.9	24.2	6.3	7.0	5.9	6.7	5.2	3.0
February	69.4	425.1	494.5	157.8	652.3	23.7	6.2	6.9	5.7	6.6	5.1	3.0
March	67.7	418.7	486.4	154.1	640.6	23.2	6.1	6.8	5.6	6.5	5.0	2.9
April	66.3	413.4	479.7	151.8	631.4	22.8	6.0	6.7	5.5	6.4	4.9	2.9
May	64.9	408.9	473.8	151.8	625.6	22.4	6.0	6.6	5.5	6.3	4.8	2.9
June	63.6	404.2	467.9	153.7	621.6	22.1	5.9	6.5	5.5	6.3	4.7	2.8
July	62.9	399.9	462.8	156.8	619.6	22.0	5.8	6.5	5.6	6.2	4.6	2.8
August	62.7	395.8	458.4	159.4	617.8	22.0	5.8	6.4	5.7	6.2	4.6	2.8
September	62.5	391.9	454.3	161.2	615.6	22.0	5.7	6.3	5.7	6.2	4.6	2.7
October	62.3	389.5	451.8	162.7	614.4	22.0	5.7	6.3	5.7	6.1	4.6	2.7
November	62.1	388.8	450.9	163.7	614.7	21.9	5.6	6.3	5.8	6.1	4.5	2.7
December	61.8	388.6	450.4	164.9	615.3	21.7	5.6	6.3	5.8	6.1	4.5	2.7

(a) Trend estimates for June 2002 to November 2002 have been revised.

PERSONS AGED 15 TO 19, Education and Labour Force: **Original**—December 2002

	EMPLOYED.....			UNEMPLOYED.....			Labour force	Not in labour force	Civilian population aged 15-19	Unemployment rate	Participation rate
	Full time	Part time	Total	Looking for f/t work	Looking for p/t work	Total					
	'000	'000	'000	'000	'000	'000	'000	'000	'000	%	%
ATTENDING NEITHER SCHOOL NOR A TERTIARY EDUCATIONAL INSTITUTION FULL TIME											
Males	145.8	68.9	214.7	35.6	6.5	42.1	256.9	46.3	303.2	16.4	84.7
Females	80.6	99.8	180.3	23.4	8.0	31.4	211.7	52.5	264.2	14.8	80.1
Persons	226.4	168.7	395.1	59.0	14.5	73.6	468.6	98.8	567.4	15.7	82.6
ATTENDING A TERTIARY EDUCATIONAL INSTITUTION FULL TIME											
Males	7.5	35.9	43.4	* 2.6	7.3	9.9	53.3	24.0	77.4	18.6	68.9
Females	7.7	56.3	64.0	* 3.3	5.6	8.8	72.8	22.6	95.3	12.1	76.3
Persons	15.2	92.1	107.4	5.9	12.8	18.7	126.1	46.6	172.7	14.9	73.0
ATTENDING SCHOOL											
Males	8.2	99.5	107.7	6.5	25.9	32.4	140.1	179.8	320.0	23.1	43.8
Females	* 4.2	126.0	130.2	* 1.4	25.3	26.7	156.9	154.5	311.4	17.0	50.4
Persons	12.4	225.6	238.0	7.9	51.2	59.1	297.1	334.3	631.4	19.9	47.1
TOTAL											
Males	161.6	204.3	365.9	44.7	39.7	84.5	450.4	250.2	700.6	18.8	64.3
Females	92.4	282.0	374.5	28.1	38.9	66.9	441.4	229.5	670.9	15.2	65.8
Persons	254.0	486.4	740.4	72.8	78.6	151.4	891.8	479.7	1 371.5	17.0	65.0

	EMPLOYED.....			UNEMPLOYED.....			Labour force	Not in labour force	Civilian population aged 15 and over	Unemp-loyment rate	Partic-ipation rate
	Full time	Part time	Total	Looking for f/t work	Looking for p/t work	Total					
	'000	'000	'000	'000	'000	'000					
MALES											
New South Wales	1 530.2	234.9	1 765.1	99.0	18.7	117.7	1 882.8	730.2	2 612.9	6.3	72.1
Victoria	1 156.1	194.8	1 350.9	66.5	16.5	83.0	1 433.9	514.8	1 948.7	5.8	73.6
Queensland	840.8	159.8	1 000.6	53.8	18.4	72.2	1 072.7	381.4	1 454.2	6.7	73.8
South Australia	337.6	56.3	393.9	20.6	3.7	24.3	418.2	182.0	600.2	5.8	69.7
Western Australia	468.5	83.7	552.2	30.2	5.8	36.0	588.3	185.4	773.6	6.1	76.0
Tasmania	97.2	15.4	112.7	10.2	2.8	13.0	125.7	56.4	182.1	10.3	69.0
Northern Territory	45.4	9.3	54.7	2.7	* 0.9	3.6	58.2	15.5	73.8	6.1	78.9
Australian Capital Territory	80.2	13.7	93.8	2.7	1.2	3.9	97.7	24.2	121.9	4.0	80.1
Australia	4 556.1	767.7	5 323.8	285.8	67.9	353.7	5 677.5	2 089.9	7 767.4	6.2	73.1
FEMALES											
New South Wales	800.9	603.3	1 404.2	58.3	27.6	85.9	1 490.1	1 192.5	2 682.6	5.8	55.5
Victoria	601.5	484.3	1 085.9	41.1	21.6	62.7	1 148.5	869.0	2 017.5	5.5	56.9
Queensland	432.9	367.2	800.1	41.1	23.6	64.7	864.8	625.5	1 490.3	7.5	58.0
South Australia	162.7	154.4	317.1	10.3	7.3	17.6	334.6	290.6	625.2	5.3	53.5
Western Australia	225.1	212.7	437.8	15.3	11.8	27.1	464.9	309.7	774.6	5.8	60.0
Tasmania	46.6	46.0	92.7	6.3	1.8	8.1	100.8	92.2	193.1	8.1	52.2
Northern Territory	29.6	14.8	44.3	1.7	1.2	2.9	47.2	21.2	68.4	6.1	69.0
Australian Capital Territory	55.4	30.3	85.7	* 0.8	* 0.6	1.5	87.2	40.1	127.3	1.7	68.5
Australia	2 354.8	1 912.9	4 267.7	175.0	95.5	270.5	4 538.2	3 440.8	7 979.0	6.0	56.9
PERSONS											
New South Wales	2 331.1	838.1	3 169.3	157.3	46.3	203.6	3 372.9	1 922.7	5 295.6	6.0	63.7
Victoria	1 757.7	679.1	2 436.8	107.5	38.1	145.7	2 582.5	1 383.8	3 966.2	5.6	65.1
Queensland	1 273.7	527.0	1 800.7	94.9	41.9	136.9	1 937.5	1 006.9	2 944.5	7.1	65.8
South Australia	500.3	210.6	710.9	30.9	10.9	41.9	752.8	472.5	1 225.4	5.6	61.4
Western Australia	693.6	296.4	990.0	45.5	17.6	63.2	1 053.1	495.1	1 548.3	6.0	68.0
Tasmania	143.9	61.5	205.4	16.6	4.6	21.1	226.5	148.6	375.1	9.3	60.4
Northern Territory	75.0	24.0	99.0	4.4	2.0	6.4	105.4	36.7	142.1	6.1	74.2
Australian Capital Territory	135.6	44.0	179.6	3.5	1.8	5.3	184.9	64.4	249.2	2.9	74.2
Australia	6 910.9	2 680.7	9 591.5	460.7	163.4	624.1	10 215.7	5 530.7	15 746.4	6.1	64.9

UNEMPLOYED PERSONS—New South Wales, Victoria and Queensland: Original

Month	NUMBER OF UNEMPLOYED PERSONS.....					UNEMPLOYMENT RATE.....					UNEMPLOYMENT TO POPULATION RATIO	
	Aged 15-19 looking for f/t work	Aged 20 and over looking for f/t work	Total looking for f/t work	Looking for p/t work	Total	Aged 15-19 looking for f/t work	Aged 20 and over looking for f/t work	Total looking for f/t work	Looking for p/t work	Total	Aged 15-19 looking for f/t work	Aged 20 and over looking for f/t work
	'000	'000	'000	'000	'000	%	%	%	%	%	%	%
NEW SOUTH WALES												
2001												
October	21.0	141.1	162.1	41.8	203.9	22.8	6.1	6.7	4.9	6.2	4.7	3.0
November	22.0	135.3	157.3	42.2	199.5	26.1	5.9	6.6	4.9	6.1	4.9	2.8
December	21.9	128.2	150.1	50.0	200.1	22.3	5.5	6.1	5.9	6.1	4.9	2.7
2002												
January	26.5	147.2	173.6	48.2	221.8	25.7	6.3	7.1	5.9	6.8	5.9	3.1
February	21.6	146.3	167.9	50.5	218.4	22.3	6.2	6.9	5.9	6.6	4.8	3.1
March	21.6	128.1	149.8	59.9	209.7	24.7	5.5	6.2	6.9	6.4	4.8	2.7
April	23.8	124.6	148.3	48.4	196.7	28.4	5.4	6.2	5.4	6.0	5.3	2.6
May	19.3	128.9	148.2	48.2	196.3	21.7	5.5	6.1	5.6	6.0	4.3	2.7
June	21.6	130.9	152.5	45.9	198.4	25.0	5.7	6.4	5.0	6.0	4.8	2.7
July	16.2	119.7	135.8	45.8	181.6	18.7	5.1	5.6	5.2	5.5	3.6	2.5
August	15.2	118.8	134.0	40.9	174.9	19.1	5.1	5.6	4.7	5.4	3.4	2.5
September	15.9	130.7	146.6	52.9	199.5	18.8	5.5	6.0	6.0	6.0	3.5	2.7
October	19.7	107.1	126.8	44.2	171.0	23.9	4.7	5.3	4.9	5.2	4.4	2.2
November	19.1	128.5	147.6	44.2	191.8	22.6	5.5	6.1	4.9	5.8	4.2	2.7
December	24.0	133.3	157.3	46.3	203.6	23.1	5.6	6.3	5.2	6.0	5.3	2.8
VICTORIA												
2001												
October	14.2	105.2	119.3	45.4	164.7	23.0	6.0	6.6	6.6	6.6	4.3	3.0
November	15.7	95.2	110.9	36.4	147.3	24.9	5.5	6.2	5.4	6.0	4.7	2.7
December	20.3	97.6	117.9	43.3	161.2	26.1	5.5	6.4	6.5	6.4	6.1	2.7
2002												
January	15.8	109.3	125.1	45.2	170.2	22.2	6.3	6.9	6.8	6.8	4.8	3.1
February	15.3	112.7	128.0	45.9	173.9	23.6	6.4	7.1	6.7	7.0	4.6	3.1
March	14.3	102.1	116.5	39.7	156.2	23.5	5.9	6.5	5.6	6.2	4.3	2.8
April	11.7	92.0	103.7	40.1	143.8	20.5	5.3	5.8	5.7	5.8	3.5	2.6
May	12.3	88.6	100.9	41.3	142.2	22.0	5.1	5.7	5.8	5.7	3.7	2.5
June	11.1	106.9	118.0	32.1	150.1	19.3	6.2	6.6	4.5	6.0	3.3	3.0
July	9.5	83.3	92.8	31.3	124.1	15.8	4.8	5.2	4.5	5.0	2.9	2.3
August	10.8	96.8	107.5	40.3	147.8	19.7	5.6	6.0	5.6	5.9	3.2	2.7
September	9.8	96.3	106.1	45.4	151.5	17.9	5.5	5.8	6.3	6.0	2.9	2.7
October	11.6	87.3	98.9	39.7	138.7	19.4	5.1	5.6	5.5	5.5	3.5	2.4
November	14.1	88.0	102.1	31.3	133.4	23.3	5.1	5.7	4.4	5.3	4.2	2.4
December	15.0	92.5	107.5	38.1	145.7	21.4	5.2	5.8	5.3	5.6	4.5	2.5
QUEENSLAND												
2001												
October	18.1	93.7	111.7	31.5	143.3	26.6	7.3	8.3	6.0	7.7	6.8	3.6
November	14.9	93.4	108.3	31.1	139.4	23.5	7.3	8.1	6.0	7.5	5.6	3.6
December	22.5	94.8	117.3	35.4	152.7	29.5	7.3	8.6	6.7	8.0	8.5	3.6
2002												
January	20.0	108.0	128.0	32.0	160.0	27.9	8.4	9.4	6.4	8.6	7.5	4.1
February	25.0	106.3	131.3	36.4	167.7	31.5	8.2	9.5	7.0	8.8	9.4	4.1
March	16.3	97.8	114.1	37.7	151.8	22.7	7.6	8.4	7.1	8.0	6.1	3.7
April	12.5	95.6	108.1	37.6	145.7	18.3	7.5	8.0	7.1	7.8	4.7	3.6
May	14.7	89.5	104.2	38.2	142.4	22.6	7.0	7.8	7.0	7.6	5.5	3.4
June	15.0	88.8	103.8	35.5	139.3	23.4	6.9	7.7	6.5	7.3	5.6	3.4
July	13.3	80.3	93.6	30.2	123.9	19.8	6.3	7.0	5.7	6.6	5.0	3.0
August	13.4	79.4	92.8	36.7	129.5	21.3	6.3	7.0	6.7	6.9	5.0	3.0
September	13.6	78.4	91.9	39.7	131.7	22.7	6.0	6.8	7.1	6.9	5.1	2.9
October	13.7	77.2	90.9	36.5	127.4	21.5	6.0	6.7	6.6	6.7	5.1	2.9
November	11.8	76.6	88.4	34.9	123.3	20.9	5.9	6.6	6.3	6.5	4.4	2.9
December	17.6	77.3	94.9	41.9	136.9	23.4	6.0	6.9	7.4	7.1	6.6	2.9

UNEMPLOYED PERSONS—South Australia, Western Australia and Tasmania: **Original**

Month	NUMBER OF UNEMPLOYED PERSONS.....					UNEMPLOYMENT RATE.....					UNEMPLOYMENT TO POPULATION RATIO	
	Aged 15-19 looking for f/t work	Aged 20 and over looking for f/t work	Total looking for f/t work	Looking for p/t work	Total	Aged 15-19 looking for f/t work	Aged 20 and over looking for f/t work	Total looking for f/t work	Looking for p/t work	Total	Aged 15-19 looking for f/t work	Aged 20 and over looking for f/t work
	'000	'000	'000	'000	'000	%	%	%	%	%	%	%
SOUTH AUSTRALIA												
2001												
October	6.1	32.8	38.9	12.1	51.0	25.3	6.7	7.6	5.5	7.0	5.9	3.0
November	5.2	32.9	38.1	10.8	49.0	24.5	6.6	7.4	5.0	6.7	5.0	3.0
December	7.1	32.7	39.7	12.5	52.2	27.2	6.6	7.6	5.6	7.0	6.8	2.9
2002												
January	9.4	34.1	43.5	12.7	56.3	33.0	7.0	8.4	5.9	7.7	9.1	3.1
February	7.8	37.6	45.5	11.5	56.9	33.8	7.6	8.8	5.1	7.7	7.6	3.4
March	5.1	33.0	38.1	11.9	50.0	26.4	6.8	7.5	5.1	6.8	4.9	3.0
April	6.5	32.4	38.8	9.8	48.6	30.0	6.7	7.7	4.1	6.5	6.3	2.9
May	6.7	32.9	39.6	10.9	50.5	32.2	6.7	7.7	4.8	6.8	6.5	3.0
June	5.8	32.5	38.3	11.1	49.4	28.3	6.7	7.6	4.7	6.7	5.6	2.9
July	4.3	31.4	35.7	8.7	44.5	20.8	6.4	7.0	3.9	6.1	4.2	2.8
August	4.5	33.0	37.6	11.3	48.9	21.8	6.7	7.3	5.1	6.7	4.4	3.0
September	5.4	32.1	37.5	10.6	48.1	24.0	6.5	7.2	4.6	6.4	5.2	2.9
October	4.4	29.8	34.1	11.0	45.1	19.9	6.1	6.7	4.8	6.1	4.2	2.7
November	4.3	29.5	33.8	9.8	43.7	19.3	6.0	6.6	4.3	5.9	4.1	2.6
December	5.1	25.9	30.9	10.9	41.9	20.4	5.1	5.8	4.9	5.6	4.9	2.3
WESTERN AUSTRALIA												
2001												
October	8.1	37.9	46.0	17.7	63.7	21.9	5.7	6.5	5.9	6.3	5.7	2.8
November	8.4	38.2	46.6	13.7	60.3	23.4	5.6	6.5	4.7	6.0	5.9	2.8
December	8.0	39.7	47.7	13.5	61.2	19.5	5.8	6.6	4.6	6.0	5.6	2.9
2002												
January	9.4	52.2	61.6	17.7	79.3	23.0	7.6	8.4	6.3	7.8	6.6	3.8
February	7.9	48.0	55.9	18.0	73.9	23.0	6.9	7.7	6.0	7.2	5.6	3.5
March	6.6	39.6	46.1	15.3	61.5	20.6	5.9	6.6	5.0	6.1	4.6	2.9
April	6.6	42.6	49.2	15.0	64.2	19.4	6.2	6.9	5.0	6.3	4.6	3.1
May	7.7	40.7	48.3	15.7	64.1	22.4	6.0	6.7	5.4	6.4	5.4	2.9
June	6.8	35.8	42.6	13.9	56.6	18.9	5.4	6.1	4.4	5.6	4.8	2.6
July	6.8	36.6	43.4	11.7	55.1	19.4	5.5	6.2	3.8	5.4	4.8	2.6
August	7.3	36.7	44.0	18.7	62.8	24.8	5.4	6.2	6.0	6.2	5.1	2.6
September	6.2	42.5	48.7	17.0	65.7	20.6	6.2	6.8	5.4	6.3	4.4	3.0
October	4.6	37.4	42.0	15.1	57.1	15.4	5.5	5.9	4.8	5.6	3.2	2.7
November	7.1	36.0	43.1	13.6	56.8	22.5	5.3	6.1	4.3	5.6	5.0	2.6
December	6.3	39.2	45.5	17.6	63.2	17.9	5.6	6.2	5.6	6.0	4.4	2.8
TASMANIA												
2001												
October	2.5	12.1	14.7	4.0	18.7	30.3	8.5	9.7	6.1	8.6	7.4	3.6
November	2.9	13.1	16.0	2.7	18.7	31.1	9.0	10.3	4.2	8.5	8.5	3.9
December	2.3	13.4	15.7	3.0	18.7	22.6	9.1	10.0	4.7	8.5	6.8	3.9
2002												
January	3.2	13.9	17.1	3.8	20.9	31.1	9.5	11.0	6.2	9.6	9.4	4.1
February	2.4	13.5	15.9	3.8	19.7	27.1	9.3	10.3	6.0	9.0	7.0	4.0
March	2.2	11.9	14.1	3.6	17.7	22.5	8.3	9.2	5.8	8.2	6.3	3.5
April	1.7	12.0	13.8	2.8	16.6	19.9	8.6	9.3	4.3	7.7	5.1	3.5
May	1.8	12.3	14.1	3.4	17.4	20.1	8.8	9.5	5.0	8.1	5.2	3.6
June	1.8	12.9	14.7	2.9	17.6	21.3	9.3	10.0	4.2	8.1	5.2	3.8
July	2.1	13.8	15.8	2.9	18.7	24.0	10.0	10.8	4.3	8.7	6.1	4.0
August	1.9	13.7	15.6	3.5	19.0	24.8	9.7	10.4	5.2	8.8	5.5	4.0
September	2.0	13.9	15.9	4.4	20.3	23.2	9.5	10.2	7.0	9.3	6.0	4.1
October	2.2	11.2	13.4	4.2	17.6	30.1	7.8	8.9	6.4	8.2	6.6	3.3
November	2.6	11.5	14.1	2.6	16.6	30.3	7.9	9.2	4.0	7.7	7.6	3.4
December	3.2	13.4	16.6	4.6	21.1	33.5	8.9	10.3	6.9	9.3	9.3	3.9

UNEMPLOYED PERSONS—Northern Territory and Australian Capital Territory: **Original**

Month	NUMBER OF UNEMPLOYED PERSONS.....					UNEMPLOYMENT RATE.....					UNEMPLOYMENT TO POPULATION RATIO	
	Aged 15-19 looking for f/t work	Aged 20 and over looking for f/t work	Total looking for f/t work	Looking for p/t work	Total	Aged 15-19 looking for f/t work	Aged 20 and over looking for f/t work	Total looking for f/t work	Looking for p/t work	Total	Aged 15-19 looking for f/t work	Aged 20 and over looking for f/t work
	'000	'000	'000	'000	'000	%	%	%	%	%	%	%
NORTHERN TERRITORY												
2001												
October	1.0	4.1	5.1	2.7	7.8	29.3	5.5	6.5	9.8	7.4	6.8	3.2
November	* 0.9	4.5	5.5	3.1	8.6	* 28.2	6.1	7.0	11.1	8.1	* 6.4	3.5
December	1.0	4.1	5.0	3.1	8.2	25.8	5.5	6.5	10.7	7.6	6.6	3.2
2002												
January	1.4	4.8	6.2	3.7	9.9	34.4	6.5	8.0	13.6	9.4	9.6	3.8
February	* 0.8	3.8	4.6	2.3	6.9	* 28.3	5.3	6.2	7.9	6.7	* 5.6	3.0
March	1.1	4.1	5.2	1.8	7.0	32.0	5.6	6.7	6.2	6.6	7.4	3.2
April	* 0.6	4.8	5.5	1.1	6.6	* 18.6	6.5	7.0	3.9	6.2	* 4.2	3.8
May	* 0.6	2.9	3.5	1.2	4.7	* 24.4	3.8	4.5	4.1	4.4	* 4.3	2.2
June	* 0.9	3.1	4.0	* 0.9	4.8	* 29.3	4.1	5.0	* 3.2	4.6	* 5.9	2.4
July	* 0.4	2.4	2.8	1.3	4.1	* 12.6	3.1	3.5	5.3	3.9	* 2.6	1.9
August	* 0.9	2.4	3.4	1.3	4.7	* 27.5	3.3	4.4	4.8	4.5	* 6.4	1.9
September	* 0.6	2.3	2.9	1.3	4.2	* 26.1	3.0	3.7	4.8	4.0	* 4.2	1.8
October	* 0.9	3.5	4.4	1.4	5.8	* 36.4	4.5	5.5	5.8	5.6	* 6.5	2.7
November	* 0.8	1.9	2.7	1.4	4.1	* 29.1	2.4	3.3	5.4	3.8	* 5.6	1.5
December	1.2	3.2	4.4	2.0	6.4	30.3	4.3	5.5	7.8	6.1	7.9	2.5
AUSTRALIAN CAPITAL TERRITORY												
2001												
October	1.2	4.3	5.5	1.5	7.0	30.0	3.4	4.3	3.3	4.0	5.1	1.9
November	* 0.9	3.9	4.8	2.0	6.7	* 22.0	3.1	3.7	4.5	3.9	* 3.7	1.7
December	* 1.0	4.2	5.2	2.0	7.2	* 22.0	3.3	3.9	4.2	4.0	* 4.3	1.9
2002												
January	1.6	5.2	6.7	2.0	8.7	29.2	4.1	5.2	4.8	5.1	6.6	2.3
February	1.2	4.3	5.5	3.4	8.9	25.2	3.4	4.2	7.5	5.1	5.0	1.9
March	* 0.8	4.0	4.9	3.2	8.1	* 21.8	3.2	3.8	6.9	4.6	* 3.5	1.8
April	* 0.3	4.3	4.6	3.3	7.9	* 8.9	3.4	3.5	7.1	4.5	* 1.3	1.9
May	* 0.3	5.6	5.8	2.9	8.8	* 7.6	4.3	4.4	6.4	4.9	* 1.1	2.5
June	* 0.7	4.3	5.0	3.2	8.2	* 18.2	3.4	3.9	6.3	4.6	* 2.9	1.9
July	* 0.4	3.7	4.1	1.6	5.7	* 11.0	2.8	3.1	3.5	3.2	* 1.8	1.6
August	* 0.7	5.6	6.3	2.1	8.4	* 23.5	4.3	4.7	4.4	4.6	* 3.1	2.5
September	* 0.7	4.3	5.0	2.4	7.4	* 20.8	3.2	3.6	5.3	4.0	* 3.0	1.9
October	* 0.5	4.9	5.5	1.7	7.2	* 15.1	3.7	4.0	3.9	4.0	* 2.3	2.2
November	* 0.5	4.4	4.9	2.0	6.9	* 16.1	3.3	3.5	4.7	3.8	* 2.0	2.0
December	* 0.4	3.1	3.5	1.8	5.3	* 11.7	2.3	2.5	3.9	2.9	* 1.9	1.4

LABOUR FORCE STATUS (AGED 15 AND OVER)—New South Wales(a)

SEASONALLY ADJUSTED.....

TREND.....

Month	SEASONALLY ADJUSTED.....					TREND.....					Civilian population aged 15 and over '000
	Employed full time '000	Total employed '000	Total unemployed '000	Unemp- loyment rate %	Partic- ipation rate %	Employed full time '000	Total employed '000	Total unemployed '000	Unemp- loyment rate %	Partic- ipation rate %	
MALES											
2001											
October	1 483.9	1 718.8	120.0	6.5	71.4	1 485.0	1 719.9	114.1	6.2	71.2	2 574.3
November	1 479.9	1 719.0	118.1	6.4	71.3	1 488.0	1 720.9	114.5	6.2	71.2	2 577.3
December	1 492.5	1 721.2	108.2	5.9	70.9	1 491.1	1 722.6	115.0	6.3	71.2	2 580.3
2002											
January	1 496.6	1 721.2	113.5	6.2	71.0	1 493.4	1 725.0	115.8	6.3	71.3	2 582.7
February	1 503.4	1 738.0	117.2	6.3	71.8	1 494.6	1 727.8	117.2	6.4	71.4	2 585.0
March	1 489.3	1 727.9	120.9	6.5	71.5	1 494.6	1 730.9	118.7	6.4	71.5	2 587.4
April	1 486.6	1 730.0	120.4	6.5	71.4	1 493.8	1 733.6	119.8	6.5	71.5	2 590.7
May	1 505.1	1 737.2	119.6	6.4	71.6	1 492.9	1 736.1	119.2	6.4	71.5	2 593.9
June	1 482.8	1 741.0	120.1	6.5	71.7	1 492.9	1 738.8	116.5	6.3	71.4	2 597.1
July	1 492.8	1 738.0	115.8	6.2	71.3	1 494.2	1 741.7	112.6	6.1	71.3	2 600.0
August	1 499.7	1 750.5	99.8	5.4	71.1	1 496.4	1 744.6	109.2	5.9	71.2	2 602.9
September	1 502.5	1 739.1	111.3	6.0	71.0	1 498.6	1 747.0	107.0	5.8	71.2	2 605.7
October	1 494.9	1 754.9	99.3	5.4	71.1	1 500.7	1 748.8	106.2	5.7	71.1	2 608.1
November	1 504.9	1 752.7	105.9	5.7	71.2	1 502.6	1 750.0	106.4	5.7	71.1	2 610.5
December	1 505.6	1 746.3	116.1	6.2	71.3	1 505.2	1 750.8	107.3	5.8	71.1	2 612.9
FEMALES											
2001											
October	760.2	1 333.5	97.5	6.8	54.1	767.1	1 337.1	92.3	6.5	54.0	2 646.5
November	762.7	1 337.8	89.5	6.3	53.9	764.0	1 338.1	92.2	6.4	54.0	2 649.2
December	759.0	1 334.7	90.7	6.4	53.8	763.7	1 341.0	90.0	6.3	54.0	2 651.9
2002											
January	787.9	1 378.3	97.3	6.6	55.6	765.3	1 344.6	86.2	6.0	53.9	2 654.0
February	780.0	1 369.0	75.0	5.2	54.4	767.3	1 348.0	82.7	5.8	53.9	2 656.1
March	781.8	1 354.5	74.8	5.2	53.8	769.1	1 350.8	80.3	5.6	53.8	2 658.2
April	751.7	1 341.1	77.2	5.4	53.3	770.9	1 353.0	79.7	5.6	53.8	2 661.1
May	779.0	1 349.1	80.5	5.6	53.7	772.1	1 354.2	80.5	5.6	53.9	2 663.9
June	767.6	1 356.2	88.2	6.1	54.2	772.8	1 354.9	82.0	5.7	53.9	2 666.8
July	769.0	1 362.1	90.1	6.2	54.4	773.1	1 356.1	83.8	5.8	53.9	2 669.6
August	791.6	1 369.3	75.4	5.2	54.1	773.7	1 358.9	84.9	5.9	54.0	2 672.5
September	775.5	1 351.6	86.6	6.0	53.8	774.2	1 362.5	85.5	5.9	54.1	2 675.4
October	752.8	1 348.5	83.4	5.8	53.5	774.4	1 366.4	86.3	5.9	54.3	2 677.8
November	780.0	1 385.2	94.5	6.4	55.2	774.7	1 370.9	87.2	6.0	54.4	2 680.2
December	783.5	1 383.3	85.9	5.8	54.8	776.2	1 375.3	87.8	6.0	54.6	2 682.6
PERSONS											
2001											
October	2 244.1	3 052.2	217.4	6.7	62.6	2 252.1	3 057.0	206.4	6.3	62.5	5 220.8
November	2 242.6	3 056.8	207.6	6.4	62.5	2 252.1	3 059.1	206.7	6.3	62.5	5 226.5
December	2 251.5	3 055.9	198.9	6.1	62.2	2 254.8	3 063.5	205.0	6.3	62.5	5 232.2
2002											
January	2 284.4	3 099.4	210.8	6.4	63.2	2 258.7	3 069.6	202.1	6.2	62.5	5 236.7
February	2 283.4	3 107.0	192.2	5.8	62.9	2 261.8	3 075.8	199.9	6.1	62.5	5 241.1
March	2 271.1	3 082.4	195.7	6.0	62.5	2 263.7	3 081.7	199.0	6.1	62.5	5 245.6
April	2 238.3	3 071.1	197.6	6.0	62.2	2 264.7	3 086.6	199.5	6.1	62.6	5 251.7
May	2 284.1	3 086.3	200.1	6.1	62.5	2 265.0	3 090.3	199.8	6.1	62.6	5 257.8
June	2 250.4	3 097.2	208.3	6.3	62.8	2 265.6	3 093.7	198.5	6.0	62.5	5 263.9
July	2 261.8	3 100.2	206.0	6.2	62.7	2 267.3	3 097.9	196.4	6.0	62.5	5 269.6
August	2 291.3	3 119.7	175.2	5.3	62.5	2 270.1	3 103.6	194.1	5.9	62.5	5 275.4
September	2 278.0	3 090.8	197.9	6.0	62.3	2 272.8	3 109.5	192.5	5.8	62.5	5 281.1
October	2 247.7	3 103.5	182.8	5.6	62.2	2 275.1	3 115.2	192.5	5.8	62.6	5 285.9
November	2 284.9	3 137.9	200.5	6.0	63.1	2 277.3	3 120.9	193.7	5.8	62.7	5 290.7
December	2 289.1	3 129.6	202.0	6.1	62.9	2 281.4	3 126.1	195.1	5.9	62.7	5 295.6

(a) Trend estimates for June 2002 to November 2002 have been revised.

LABOUR FORCE STATUS (AGED 15 AND OVER)—Victoria(a)

SEASONALLY ADJUSTED.....

TREND.....

Month	SEASONALLY ADJUSTED.....					TREND.....					Civilian population aged 15 and over '000
	Employed full time '000	Total employed '000	Total unemployed '000	Unemp- loyment rate %	Partic- ipation rate %	Employed full time '000	Total employed '000	Total unemployed '000	Unemp- loyment rate %	Partic- ipation rate %	
MALES											
2001											
October	1 115.5	1 301.6	101.9	7.3	73.5	1 120.2	1 304.2	92.9	6.6	73.1	1 910.0
November	1 125.9	1 305.6	87.8	6.3	72.8	1 124.3	1 306.3	93.0	6.6	73.1	1 913.1
December	1 133.1	1 308.9	88.2	6.3	72.9	1 127.2	1 308.4	91.8	6.6	73.1	1 916.2
2002											
January	1 135.3	1 317.6	94.8	6.7	73.6	1 128.8	1 310.4	89.9	6.4	73.0	1 918.6
February	1 117.8	1 303.7	89.7	6.4	72.5	1 129.4	1 312.2	87.7	6.3	72.9	1 921.1
March	1 131.5	1 317.9	82.2	5.9	72.8	1 129.3	1 313.6	85.6	6.1	72.7	1 923.5
April	1 124.5	1 310.4	82.0	5.9	72.3	1 128.9	1 314.7	84.0	6.0	72.6	1 926.3
May	1 133.7	1 317.1	82.8	5.9	72.6	1 127.8	1 315.0	83.1	5.9	72.5	1 929.1
June	1 130.0	1 319.0	87.5	6.2	72.8	1 125.4	1 313.8	82.7	5.9	72.3	1 931.9
July	1 120.1	1 309.3	76.9	5.5	71.7	1 122.1	1 311.7	83.0	6.0	72.1	1 934.5
August	1 117.7	1 313.3	86.9	6.2	72.3	1 118.9	1 309.9	83.4	6.0	71.9	1 937.0
September	1 119.5	1 309.1	82.2	5.9	71.7	1 117.1	1 309.5	83.5	6.0	71.8	1 939.6
October	1 101.9	1 295.0	86.9	6.3	71.1	1 117.1	1 310.9	83.4	6.0	71.8	1 942.6
November	1 121.1	1 314.7	80.1	5.7	71.7	1 118.5	1 313.4	83.2	6.0	71.8	1 945.6
December	1 134.3	1 333.0	83.4	5.9	72.7	1 121.0	1 316.8	83.0	5.9	71.9	1 948.7
FEMALES											
2001											
October	566.5	1 016.4	72.0	6.6	54.9	564.4	1 015.9	69.3	6.4	54.7	1 982.3
November	566.1	1 019.3	71.0	6.5	54.9	563.6	1 016.8	70.6	6.5	54.8	1 984.8
December	557.3	1 014.1	74.5	6.8	54.8	561.4	1 018.7	70.9	6.5	54.8	1 987.4
2002											
January	559.1	1 036.1	71.5	6.5	55.7	558.6	1 021.8	69.9	6.4	54.9	1 989.4
February	549.7	1 027.4	67.9	6.2	55.0	556.0	1 025.4	67.7	6.2	54.9	1 991.5
March	558.5	1 033.2	63.0	5.7	55.0	554.5	1 028.8	65.0	5.9	54.9	1 993.5
April	560.4	1 032.8	59.6	5.5	54.7	554.6	1 031.8	62.9	5.7	54.8	1 996.1
May	553.7	1 040.7	60.1	5.5	55.1	556.4	1 034.6	61.7	5.6	54.9	1 998.7
June	555.5	1 028.8	69.4	6.3	54.9	560.2	1 037.6	61.4	5.6	54.9	2 001.3
July	556.2	1 031.7	54.5	5.0	54.2	565.4	1 041.6	61.5	5.6	55.0	2 003.9
August	580.8	1 059.1	65.1	5.8	56.0	571.6	1 047.1	61.8	5.6	55.3	2 006.6
September	584.6	1 052.0	62.3	5.6	55.5	577.7	1 053.6	62.0	5.6	55.5	2 009.3
October	578.9	1 059.4	59.6	5.3	55.6	582.9	1 060.1	62.2	5.5	55.8	2 012.0
November	586.1	1 063.5	64.0	5.7	56.0	587.2	1 065.9	62.5	5.5	56.0	2 014.8
December	590.0	1 076.3	63.7	5.6	56.5	590.3	1 071.5	62.6	5.5	56.2	2 017.5
PERSONS											
2001											
October	1 682.1	2 318.1	173.9	7.0	64.0	1 684.6	2 320.1	162.2	6.5	63.8	3 892.3
November	1 692.0	2 324.8	158.9	6.4	63.7	1 687.9	2 323.0	163.6	6.6	63.8	3 897.9
December	1 690.4	2 322.9	162.7	6.5	63.7	1 688.6	2 327.1	162.7	6.5	63.8	3 903.5
2002											
January	1 694.5	2 353.7	166.3	6.6	64.5	1 687.3	2 332.3	159.8	6.4	63.8	3 908.0
February	1 667.5	2 331.1	157.6	6.3	63.6	1 685.3	2 337.5	155.4	6.2	63.7	3 912.6
March	1 689.9	2 351.2	145.2	5.8	63.7	1 683.7	2 342.4	150.7	6.0	63.6	3 917.1
April	1 684.9	2 343.1	141.6	5.7	63.3	1 683.5	2 346.5	146.9	5.9	63.6	3 922.5
May	1 687.5	2 357.8	142.9	5.7	63.7	1 684.3	2 349.6	144.8	5.8	63.5	3 927.8
June	1 685.5	2 347.8	156.9	6.3	63.7	1 685.6	2 351.3	144.1	5.8	63.4	3 933.2
July	1 676.3	2 341.0	131.4	5.3	62.8	1 687.6	2 353.3	144.5	5.8	63.4	3 938.4
August	1 698.5	2 372.4	152.1	6.0	64.0	1 690.4	2 357.0	145.2	5.8	63.4	3 943.6
September	1 704.0	2 361.1	144.5	5.8	63.5	1 694.8	2 363.1	145.5	5.8	63.5	3 948.8
October	1 680.8	2 354.4	146.5	5.9	63.2	1 700.1	2 371.0	145.6	5.8	63.6	3 954.6
November	1 707.2	2 378.1	144.1	5.7	63.7	1 705.7	2 379.4	145.8	5.8	63.8	3 960.4
December	1 724.3	2 409.3	147.1	5.8	64.5	1 711.3	2 388.3	145.6	5.7	63.9	3 966.2

(a) Trend estimates for June 2002 to November 2002 have been revised.

LABOUR FORCE STATUS (AGED 15 AND OVER)—Queensland(a)

SEASONALLY ADJUSTED.....

TREND.....

Month	SEASONALLY ADJUSTED.....					TREND.....					Civilian population aged 15 and over '000
	Employed full time '000	Total employed '000	Total unemployed '000	Unemployment rate %	Participation rate %	Employed full time '000	Total employed '000	Total unemployed '000	Unemployment rate %	Participation rate %	
MALES											
2001											
October	815.9	954.3	83.8	8.1	73.1	812.5	952.5	86.3	8.3	73.1	1 420.8
November	811.9	952.7	86.0	8.3	73.0	815.1	955.3	86.8	8.3	73.2	1 422.8
December	816.3	958.5	88.2	8.4	73.5	817.4	958.1	87.3	8.3	73.4	1 424.8
2002											
January	817.5	956.8	89.9	8.6	73.4	819.6	961.2	87.0	8.3	73.5	1 426.8
February	824.8	970.0	85.6	8.1	73.9	822.1	964.9	85.7	8.2	73.5	1 428.8
March	824.8	969.1	82.9	7.9	73.5	824.5	968.9	83.1	7.9	73.5	1 430.8
April	825.3	970.3	79.5	7.6	73.2	826.5	972.8	79.5	7.6	73.4	1 433.3
May	830.9	975.5	76.8	7.3	73.3	827.7	976.0	75.7	7.2	73.3	1 435.8
June	826.9	980.0	72.1	6.8	73.1	828.3	978.4	72.4	6.9	73.1	1 438.3
July	826.0	982.4	66.2	6.3	72.8	828.7	980.1	70.1	6.7	72.9	1 441.1
August	831.8	982.4	70.3	6.7	72.9	829.0	981.5	69.0	6.6	72.8	1 443.9
September	827.9	980.1	67.8	6.5	72.4	829.2	982.9	68.7	6.5	72.7	1 446.7
October	830.0	980.2	69.7	6.6	72.5	829.4	984.3	68.9	6.5	72.7	1 449.2
November	830.4	989.5	68.4	6.5	72.9	829.5	985.9	69.4	6.6	72.7	1 451.7
December	828.3	989.4	72.3	6.8	73.0	829.7	987.3	70.1	6.6	72.8	1 454.2
FEMALES											
2001											
October	411.9	761.4	67.1	8.1	57.1	412.2	762.3	64.4	7.8	56.9	1 451.8
November	413.3	761.3	62.6	7.6	56.7	414.0	763.7	64.0	7.7	56.9	1 454.1
December	413.7	766.0	62.9	7.6	56.9	416.4	765.8	63.3	7.6	56.9	1 456.4
2002											
January	414.2	766.2	62.6	7.5	56.8	419.0	768.2	62.7	7.5	57.0	1 458.7
February	424.9	772.2	65.0	7.8	57.3	421.2	769.7	62.4	7.5	57.0	1 460.9
March	431.3	779.8	60.6	7.2	57.4	422.6	769.9	62.9	7.6	56.9	1 463.2
April	418.2	761.0	62.2	7.6	56.1	422.7	769.1	64.0	7.7	56.8	1 466.1
May	423.5	770.3	63.9	7.7	56.8	422.0	768.7	65.4	7.8	56.8	1 469.0
June	418.4	769.9	70.1	8.3	57.1	421.4	769.7	66.6	8.0	56.8	1 472.0
July	417.7	760.8	68.7	8.3	56.2	421.3	772.6	67.1	8.0	56.9	1 475.1
August	423.4	783.0	66.9	7.9	57.5	422.2	777.0	66.9	7.9	57.1	1 478.2
September	425.6	785.8	65.3	7.7	57.5	423.5	781.7	65.9	7.8	57.2	1 481.3
October	427.6	788.7	64.2	7.5	57.5	424.4	785.6	64.8	7.6	57.3	1 484.3
November	422.4	784.6	63.1	7.4	57.0	424.8	788.5	63.7	7.5	57.3	1 487.3
December	423.8	790.5	62.8	7.4	57.3	425.3	791.0	62.6	7.3	57.3	1 490.3
PERSONS											
2001											
October	1 227.8	1 715.8	150.9	8.1	65.0	1 224.8	1 714.8	150.8	8.1	64.9	2 872.6
November	1 225.2	1 714.0	148.5	8.0	64.7	1 229.1	1 718.9	150.8	8.1	65.0	2 876.9
December	1 230.1	1 724.5	151.1	8.1	65.1	1 233.8	1 723.9	150.6	8.0	65.1	2 881.2
2002											
January	1 231.7	1 723.1	152.5	8.1	65.0	1 238.6	1 729.4	149.7	8.0	65.1	2 885.5
February	1 249.6	1 742.2	150.6	8.0	65.5	1 243.3	1 734.7	148.1	7.9	65.2	2 889.8
March	1 256.0	1 748.9	143.5	7.6	65.4	1 247.1	1 738.8	146.0	7.7	65.1	2 894.0
April	1 243.5	1 731.2	141.7	7.6	64.6	1 249.2	1 741.8	143.6	7.6	65.0	2 899.4
May	1 254.4	1 745.7	140.7	7.5	64.9	1 249.7	1 744.7	141.2	7.5	64.9	2 904.8
June	1 245.2	1 749.9	142.2	7.5	65.0	1 249.7	1 748.1	139.0	7.4	64.8	2 910.2
July	1 243.8	1 743.2	134.9	7.2	64.4	1 250.0	1 752.7	137.3	7.3	64.8	2 916.2
August	1 255.2	1 765.4	137.3	7.2	65.1	1 251.2	1 758.5	135.9	7.2	64.8	2 922.1
September	1 253.5	1 766.0	133.1	7.0	64.9	1 252.7	1 764.6	134.7	7.1	64.9	2 928.0
October	1 257.5	1 768.9	133.9	7.0	64.9	1 253.8	1 769.9	133.7	7.0	64.9	2 933.5
November	1 252.7	1 774.2	131.6	6.9	64.8	1 254.3	1 774.4	133.1	7.0	64.9	2 939.0
December	1 252.1	1 779.9	135.1	7.1	65.0	1 255.0	1 778.3	132.7	6.9	64.9	2 944.5

(a) Trend estimates for June 2002 to November 2002 have been revised.

LABOUR FORCE STATUS (AGED 15 AND OVER)—South Australia(a)

SEASONALLY ADJUSTED.....

TREND.....

Month	SEASONALLY ADJUSTED.....					TREND.....					Civilian population aged 15 and over '000
	Employed full time '000	Total employed '000	Total unemployed '000	Unemployment rate %	Participation rate %	Employed full time '000	Total employed '000	Total unemployed '000	Unemployment rate %	Participation rate %	
MALES											
2001											
October	318.4	374.9	32.7	8.0	68.5	317.8	375.1	32.4	8.0	68.5	594.5
November	318.8	376.4	32.1	7.9	68.7	318.5	376.6	32.0	7.8	68.7	594.8
December	317.6	377.3	31.7	7.8	68.7	319.2	378.4	31.6	7.7	68.9	595.1
2002											
January	323.0	380.6	31.2	7.6	69.2	319.8	380.1	31.3	7.6	69.1	595.5
February	317.3	381.2	32.5	7.8	69.4	320.3	381.6	31.0	7.5	69.3	595.9
March	321.1	384.2	28.7	7.0	69.3	320.8	382.4	30.8	7.4	69.3	596.2
April	322.0	383.3	30.5	7.4	69.4	321.4	382.6	30.6	7.4	69.2	596.6
May	324.5	383.2	30.0	7.3	69.2	322.0	382.4	30.3	7.4	69.1	597.0
June	319.2	380.0	32.1	7.8	69.0	322.6	382.3	30.0	7.3	69.0	597.4
July	323.3	382.0	28.3	6.9	68.6	323.2	382.6	29.4	7.1	68.9	597.9
August	325.4	380.3	29.4	7.2	68.5	324.0	383.4	28.6	6.9	68.8	598.4
September	326.4	389.9	26.6	6.4	69.5	325.1	384.6	27.6	6.7	68.8	598.9
October	323.1	384.8	26.4	6.4	68.6	326.4	385.8	26.6	6.4	68.8	599.3
November	326.5	385.2	26.7	6.5	68.7	327.7	386.9	25.7	6.2	68.8	599.8
December	333.0	389.3	24.0	5.8	68.9	329.2	388.0	24.9	6.0	68.8	600.2
FEMALES											
2001											
October	154.0	303.5	20.0	6.2	52.2	155.6	303.8	20.1	6.2	52.3	619.6
November	159.3	307.9	18.4	5.6	52.6	155.1	304.2	20.1	6.2	52.3	619.9
December	154.7	303.8	20.4	6.3	52.3	154.2	304.7	20.1	6.2	52.4	620.1
2002											
January	151.8	304.9	21.1	6.5	52.5	152.9	305.5	20.1	6.2	52.5	620.5
February	151.0	305.7	20.6	6.3	52.6	151.6	306.7	20.0	6.1	52.6	620.9
March	148.3	305.0	19.8	6.1	52.3	150.7	308.1	19.8	6.0	52.8	621.3
April	150.4	311.8	18.8	5.7	53.2	150.2	309.4	19.5	5.9	52.9	621.7
May	153.3	312.1	18.9	5.7	53.2	150.3	310.3	19.4	5.9	53.0	622.1
June	150.3	314.1	19.5	5.9	53.6	150.6	310.6	19.6	5.9	53.0	622.5
July	149.7	306.4	19.8	6.1	52.4	151.1	310.3	20.0	6.0	53.0	623.0
August	151.4	308.7	20.4	6.2	52.8	151.8	309.8	20.2	6.1	52.9	623.5
September	152.7	309.2	21.4	6.5	53.0	152.7	309.6	20.1	6.1	52.9	624.0
October	154.9	310.9	20.4	6.1	53.1	153.9	309.8	19.8	6.0	52.8	624.4
November	153.6	310.7	18.5	5.6	52.7	155.1	310.1	19.4	5.9	52.7	624.8
December	158.5	310.7	17.8	5.4	52.6	156.4	310.5	18.9	5.7	52.7	625.2
PERSONS											
2001											
October	472.4	678.4	52.6	7.2	60.2	473.4	678.9	52.5	7.2	60.2	1 214.2
November	478.2	684.3	50.5	6.9	60.5	473.7	680.8	52.1	7.1	60.3	1 214.7
December	472.3	681.1	52.1	7.1	60.3	473.4	683.0	51.7	7.0	60.5	1 215.2
2002											
January	474.8	685.5	52.4	7.1	60.7	472.7	685.6	51.4	7.0	60.6	1 216.0
February	468.3	687.0	53.1	7.2	60.8	471.9	688.3	51.0	6.9	60.8	1 216.7
March	469.4	689.2	48.5	6.6	60.6	471.5	690.5	50.5	6.8	60.9	1 217.5
April	472.5	695.1	49.3	6.6	61.1	471.6	692.0	50.1	6.7	60.9	1 218.3
May	477.8	695.3	48.9	6.6	61.0	472.3	692.7	49.7	6.7	60.9	1 219.1
June	469.5	694.1	51.6	6.9	61.1	473.3	692.9	49.6	6.7	60.9	1 219.9
July	473.0	688.5	48.0	6.5	60.3	474.3	692.8	49.3	6.6	60.8	1 220.9
August	476.8	688.9	49.9	6.7	60.5	475.8	693.2	48.8	6.6	60.7	1 221.9
September	479.2	699.1	48.0	6.4	61.1	477.8	694.2	47.7	6.4	60.7	1 222.9
October	478.0	695.7	46.7	6.3	60.7	480.3	695.6	46.4	6.3	60.6	1 223.7
November	480.1	695.8	45.2	6.1	60.5	482.8	697.1	45.1	6.1	60.6	1 224.6
December	491.5	700.1	41.8	5.6	60.5	485.6	698.5	43.8	5.9	60.6	1 225.4

(a) Trend estimates for June 2002 to November 2002 have been revised.

LABOUR FORCE STATUS (AGED 15 AND OVER)—Western Australia(a)

SEASONALLY ADJUSTED.....

TREND.....

Month	SEASONALLY ADJUSTED.....					TREND.....					Civilian population aged 15 and over '000
	Employed full time '000	Total employed '000	Total unemployed '000	Unemp-loyment rate %	Partic-ipation rate %	Employed full time '000	Total employed '000	Total unemployed '000	Unemp-loyment rate %	Partic-ipation rate %	
MALES											
2001											
October	454.1	529.8	40.1	7.0	75.1	456.6	530.9	40.6	7.1	75.3	758.9
November	464.3	536.5	38.2	6.6	75.6	458.2	532.5	39.4	6.9	75.3	760.0
December	457.2	533.7	38.6	6.7	75.2	459.2	533.7	38.7	6.8	75.2	761.1
2002											
January	460.9	533.1	39.9	7.0	75.2	459.9	534.8	38.4	6.7	75.2	761.9
February	461.3	537.5	38.7	6.7	75.5	460.1	535.8	38.5	6.7	75.3	762.8
March	455.3	535.0	34.4	6.0	74.6	459.8	536.8	38.6	6.7	75.3	763.7
April	458.3	536.6	41.7	7.2	75.6	458.7	537.9	38.9	6.7	75.4	764.9
May	462.8	537.9	42.8	7.4	75.8	457.4	538.9	39.3	6.8	75.5	766.1
June	459.1	547.1	34.7	6.0	75.8	455.8	539.8	39.6	6.8	75.5	767.3
July	448.9	536.3	39.6	6.9	74.9	454.4	540.2	39.8	6.9	75.5	768.5
August	449.8	539.9	41.7	7.2	75.6	453.8	540.7	39.6	6.8	75.4	769.6
September	455.0	540.0	41.5	7.1	75.4	454.0	541.1	39.2	6.8	75.3	770.8
October	458.1	542.7	35.8	6.2	74.9	455.0	541.8	38.8	6.7	75.2	771.8
November	453.5	543.2	39.0	6.7	75.3	456.4	542.5	38.3	6.6	75.2	772.7
December	462.0	543.8	37.2	6.4	75.1	458.1	542.9	38.1	6.6	75.1	773.6
FEMALES											
2001											
October	206.0	411.4	28.8	6.6	58.0	207.5	410.8	27.6	6.3	57.7	759.5
November	206.7	412.7	26.0	5.9	57.7	206.2	411.2	27.3	6.2	57.7	760.5
December	203.7	409.4	25.6	5.9	57.1	205.3	411.9	27.0	6.2	57.6	761.6
2002											
January	203.6	407.4	30.6	7.0	57.5	205.4	412.8	26.4	6.0	57.6	762.5
February	207.4	417.7	25.6	5.8	58.1	206.5	414.1	25.3	5.8	57.6	763.4
March	205.6	420.0	21.8	4.9	57.8	208.1	415.2	24.2	5.5	57.5	764.2
April	213.7	416.0	22.4	5.1	57.3	209.7	416.0	23.2	5.3	57.4	765.5
May	213.2	412.7	23.5	5.4	56.9	210.8	416.8	22.7	5.2	57.3	766.9
June	209.6	417.2	23.3	5.3	57.3	211.4	417.4	22.6	5.1	57.3	768.2
July	207.3	419.0	20.9	4.7	57.2	211.4	418.3	22.9	5.2	57.3	769.3
August	214.1	417.4	25.5	5.8	57.5	211.3	419.5	23.4	5.3	57.5	770.5
September	214.7	426.8	22.8	5.1	58.3	211.3	421.0	23.9	5.4	57.7	771.7
October	208.4	420.2	26.0	5.8	57.8	211.4	422.2	24.5	5.5	57.8	772.7
November	209.0	418.8	21.5	4.9	56.9	211.7	423.3	25.2	5.6	58.0	773.6
December	215.1	428.0	29.3	6.4	59.0	212.2	424.1	26.0	5.8	58.1	774.6
PERSONS											
2001											
October	660.1	941.2	68.9	6.8	66.5	664.1	941.8	68.2	6.8	66.5	1 518.3
November	671.0	949.2	64.2	6.3	66.7	664.3	943.7	66.7	6.6	66.5	1 520.5
December	660.8	943.1	64.2	6.4	66.2	664.5	945.5	65.6	6.5	66.4	1 522.7
2002											
January	664.5	940.5	70.6	7.0	66.3	665.3	947.6	64.8	6.4	66.4	1 524.4
February	668.7	955.2	64.3	6.3	66.8	666.7	949.9	63.8	6.3	66.4	1 526.2
March	660.9	955.0	56.2	5.6	66.2	667.9	952.0	62.8	6.2	66.4	1 527.9
April	671.9	952.7	64.2	6.3	66.4	668.4	953.9	62.2	6.1	66.4	1 530.4
May	676.0	950.6	66.3	6.5	66.3	668.2	955.7	62.0	6.1	66.4	1 532.9
June	668.8	964.2	58.0	5.7	66.6	667.2	957.2	62.2	6.1	66.4	1 535.4
July	656.2	955.3	60.5	6.0	66.1	665.8	958.5	62.6	6.1	66.4	1 537.8
August	663.9	957.2	67.2	6.6	66.5	665.1	960.2	63.0	6.2	66.4	1 540.1
September	669.7	966.8	64.3	6.2	66.8	665.3	962.1	63.1	6.2	66.5	1 542.5
October	666.4	962.9	61.8	6.0	66.3	666.5	964.0	63.3	6.2	66.5	1 544.4
November	662.5	962.1	60.4	5.9	66.1	668.1	965.8	63.5	6.2	66.6	1 546.3
December	677.1	971.8	66.5	6.4	67.1	670.3	967.1	64.1	6.2	66.6	1 548.3

(a) Trend estimates for June 2002 to November 2002 have been revised.

LABOUR FORCE STATUS (AGED 15 AND OVER)—Tasmania(a)

SEASONALLY ADJUSTED.....

TREND.....

Month	SEASONALLY ADJUSTED.....					TREND.....					Civilian population aged 15 and over '000
	Employed full time '000	Total employed '000	Total unemployed '000	Unemployment rate %	Participation rate %	Employed full time '000	Total employed '000	Total unemployed '000	Unemployment rate %	Participation rate %	
MALES											
2001											
October	92.5	109.9	12.4	10.1	67.5	93.8	109.6	12.6	10.3	67.5	181.2
November	93.9	110.6	12.7	10.3	68.0	93.9	110.1	12.2	10.0	67.5	181.2
December	94.0	109.7	11.5	9.5	66.9	93.9	110.3	11.8	9.7	67.4	181.2
2002											
January	93.8	110.8	11.4	9.3	67.4	93.8	110.2	11.4	9.4	67.1	181.2
February	94.0	110.6	10.5	8.6	66.8	93.5	109.6	11.2	9.3	66.7	181.3
March	93.7	108.7	11.6	9.6	66.4	93.1	108.9	11.2	9.3	66.3	181.3
April	92.0	107.7	11.0	9.3	65.5	92.7	108.3	11.3	9.5	66.0	181.4
May	91.5	106.9	12.0	10.1	65.5	92.5	108.0	11.4	9.6	65.8	181.5
June	93.6	109.2	11.4	9.5	66.4	92.6	108.0	11.4	9.6	65.8	181.6
July	91.6	107.2	11.6	9.8	65.4	92.9	108.4	11.3	9.4	65.9	181.7
August	94.2	109.5	10.4	8.7	66.0	93.3	109.1	11.1	9.2	66.1	181.8
September	94.7	110.5	11.5	9.4	67.1	93.8	109.7	11.0	9.1	66.4	181.8
October	92.8	109.0	10.5	8.8	65.7	94.2	110.2	10.9	9.0	66.6	181.9
November	95.3	112.1	10.1	8.2	67.1	94.5	110.7	11.0	9.1	66.9	182.0
December	94.8	110.5	12.6	10.3	67.6	94.8	111.0	11.2	9.2	67.1	182.1
FEMALES											
2001											
October	45.0	90.1	6.5	6.7	50.4	45.2	89.6	7.2	7.5	50.5	191.7
November	44.9	90.3	6.6	6.8	50.5	45.2	89.4	7.2	7.5	50.4	191.8
December	44.6	88.8	7.0	7.3	50.0	44.9	89.0	7.2	7.5	50.2	191.8
2002											
January	44.5	87.6	8.2	8.5	49.9	44.3	88.7	7.2	7.5	49.9	191.9
February	43.0	88.3	8.4	8.6	50.3	43.6	88.5	7.1	7.4	49.8	192.0
March	44.4	88.9	5.9	6.2	49.4	43.0	88.8	6.9	7.2	49.8	192.1
April	41.6	88.7	6.1	6.4	49.3	42.4	89.2	6.8	7.1	50.0	192.2
May	42.2	90.2	6.3	6.5	50.2	42.0	89.7	6.9	7.2	50.2	192.3
June	41.2	90.6	7.3	7.5	50.9	42.0	89.8	7.2	7.4	50.4	192.4
July	41.7	89.5	9.0	9.1	51.1	42.3	89.7	7.5	7.7	50.5	192.5
August	43.0	90.4	7.3	7.5	50.7	42.9	89.5	7.7	7.9	50.4	192.6
September	45.1	87.6	8.1	8.4	49.6	43.7	89.2	7.8	8.0	50.3	192.7
October	44.5	89.6	7.3	7.5	50.2	44.3	89.1	7.7	8.0	50.2	192.8
November	43.1	88.0	7.0	7.4	49.2	44.9	89.2	7.7	8.0	50.2	193.0
December	46.6	91.0	8.5	8.5	51.5	45.4	89.3	7.7	7.9	50.2	193.1
PERSONS											
2001											
October	137.5	200.1	18.9	8.6	58.7	138.9	199.2	19.8	9.0	58.7	372.9
November	138.8	200.9	19.3	8.8	59.0	139.1	199.5	19.5	8.9	58.7	373.0
December	138.6	198.5	18.6	8.6	58.2	138.7	199.3	19.0	8.7	58.5	373.0
2002											
January	138.4	198.4	19.6	9.0	58.4	138.1	198.8	18.6	8.6	58.3	373.2
February	137.0	198.9	18.8	8.6	58.3	137.1	198.2	18.3	8.5	58.0	373.3
March	138.1	197.7	17.5	8.1	57.6	136.0	197.7	18.1	8.4	57.8	373.4
April	133.6	196.4	17.1	8.0	57.2	135.1	197.6	18.1	8.4	57.7	373.6
May	133.7	197.0	18.3	8.5	57.6	134.5	197.6	18.4	8.5	57.8	373.8
June	134.8	199.8	18.7	8.6	58.4	134.6	197.8	18.6	8.6	57.9	374.0
July	133.3	196.7	20.6	9.5	58.1	135.2	198.1	18.8	8.6	58.0	374.2
August	137.1	200.0	17.8	8.2	58.2	136.3	198.5	18.8	8.6	58.0	374.4
September	139.8	198.0	19.5	9.0	58.1	137.5	198.9	18.7	8.6	58.1	374.6
October	137.3	198.6	17.7	8.2	57.7	138.5	199.4	18.7	8.6	58.2	374.8
November	138.4	200.1	17.1	7.9	57.9	139.4	199.9	18.7	8.6	58.3	374.9
December	141.4	201.5	21.1	9.5	59.3	140.2	200.3	18.9	8.6	58.4	375.1

(a) Trend estimates for June 2002 to November 2002 have been revised.

LABOUR FORCE STATUS (AGED 15 AND OVER)—Northern Territory(a)

TREND.....

Month	Employed full time '000	Total employed '000	Total unemployed '000	Unemployment rate %	Participation rate %	Civilian population aged 15 and over '000
MALES						
2001						
October	44.3	54.4	4.6	7.7	79.6	74.1
November	44.0	54.2	4.6	7.9	79.4	74.1
December	43.8	54.2	4.7	8.0	79.5	74.2
2002						
January	43.7	54.5	4.7	7.9	79.9	74.1
February	43.8	55.0	4.6	7.7	80.3	74.1
March	44.2	55.5	4.3	7.2	80.7	74.1
April	44.8	56.0	3.9	6.5	80.9	74.1
May	45.3	56.3	3.5	5.8	80.7	74.0
June	45.5	56.2	3.1	5.2	80.1	74.0
July	45.4	55.8	2.9	4.9	79.4	74.0
August	45.2	55.3	2.9	4.9	78.6	73.9
September	44.9	54.8	3.0	5.2	78.2	73.9
October	44.9	54.4	3.2	5.6	78.0	73.9
November	45.0	54.1	3.4	5.9	77.9	73.8
December	45.2	54.0	3.5	6.1	77.9	73.8
FEMALES						
2001						
October	28.1	42.5	3.8	8.3	67.7	68.5
November	28.0	42.8	3.8	8.1	68.0	68.5
December	28.1	43.3	3.6	7.7	68.4	68.6
2002						
January	28.2	43.9	3.2	6.9	68.7	68.6
February	28.4	44.5	2.8	5.9	68.8	68.7
March	28.6	44.8	2.4	5.0	68.7	68.7
April	28.9	44.9	2.0	4.3	68.4	68.7
May	29.1	44.8	1.9	4.1	67.9	68.7
June	29.4	44.5	1.8	4.0	67.4	68.7
July	29.6	44.2	1.9	4.1	67.1	68.6
August	29.8	44.0	1.9	4.2	67.0	68.5
September	29.8	43.9	2.0	4.3	67.1	68.5
October	29.9	44.0	2.1	4.5	67.3	68.4
November	29.9	44.1	2.1	4.6	67.5	68.4
December	29.8	44.2	2.2	4.7	67.9	68.4
PERSONS						
2001						
October	72.4	96.9	8.4	8.0	73.9	142.5
November	72.1	97.0	8.4	8.0	73.9	142.6
December	71.9	97.5	8.3	7.8	74.1	142.7
2002						
January	71.9	98.4	7.9	7.5	74.5	142.8
February	72.2	99.4	7.4	6.9	74.8	142.8
March	72.9	100.3	6.7	6.2	74.9	142.8
April	73.7	101.0	5.9	5.5	74.9	142.8
May	74.4	101.0	5.3	5.0	74.5	142.7
June	74.8	100.7	4.9	4.7	74.0	142.6
July	75.0	100.0	4.7	4.5	73.5	142.6
August	74.9	99.3	4.8	4.6	73.0	142.5
September	74.8	98.7	5.0	4.8	72.8	142.4
October	74.8	98.3	5.3	5.1	72.8	142.3
November	74.9	98.1	5.5	5.3	72.9	142.2
December	75.0	98.2	5.7	5.5	73.1	142.1

(a) Trend estimates for June 2002 to November 2002 have been revised. Estimates for the most recent three months may be subject to significant revisions as data for later months become available.

LABOUR FORCE STATUS (AGED 15 AND OVER)—Australian Capital Territory(a)

TREND.....

Month	Employed full time '000	Total employed '000	Total unemployed '000	Unemp- loyment rate %	Partic- ipation rate %	Civilian population aged 15 and over '000
MALES						
2001						
October	72.9	87.8	5.0	5.4	77.4	119.9
November	73.1	88.0	4.8	5.1	77.3	120.1
December	73.2	88.0	4.7	5.1	77.1	120.2
2002						
January	73.4	87.8	4.7	5.1	76.9	120.4
February	73.8	87.7	4.8	5.1	76.7	120.5
March	74.2	87.6	4.7	5.1	76.5	120.6
April	74.8	87.9	4.6	5.0	76.6	120.8
May	75.3	88.4	4.5	4.9	76.9	120.9
June	75.9	89.1	4.5	4.8	77.3	121.0
July	76.5	89.8	4.5	4.7	77.8	121.1
August	77.1	90.3	4.5	4.7	78.2	121.1
September	77.6	90.7	4.5	4.8	78.5	121.2
October	78.1	91.1	4.5	4.7	78.7	121.5
November	78.6	91.5	4.5	4.7	78.9	121.7
December	79.0	91.8	4.5	4.6	79.0	121.9
FEMALES						
2001						
October	50.9	79.4	2.9	3.6	65.6	125.4
November	51.1	79.5	2.8	3.4	65.6	125.5
December	51.1	79.7	2.8	3.4	65.6	125.6
2002						
January	50.8	80.0	2.8	3.4	65.9	125.7
February	50.5	80.4	2.9	3.5	66.2	125.9
March	50.4	80.9	3.1	3.6	66.6	126.0
April	50.5	81.4	3.2	3.8	67.1	126.1
May	50.9	81.9	3.4	4.0	67.6	126.2
June	51.4	82.3	3.5	4.1	67.9	126.4
July	51.9	82.7	3.5	4.1	68.1	126.5
August	52.6	82.9	3.4	3.9	68.1	126.7
September	53.2	83.1	3.2	3.7	68.1	126.8
October	54.0	83.4	2.9	3.4	68.0	127.0
November	54.6	83.7	2.6	3.1	67.9	127.1
December	55.2	83.9	2.4	2.7	67.8	127.3
PERSONS						
2001						
October	123.9	167.2	7.9	4.5	71.4	245.3
November	124.2	167.5	7.6	4.3	71.3	245.6
December	124.3	167.7	7.5	4.3	71.3	245.9
2002						
January	124.3	167.8	7.5	4.3	71.3	246.1
February	124.3	168.0	7.7	4.4	71.3	246.4
March	124.6	168.5	7.8	4.4	71.5	246.6
April	125.3	169.2	7.9	4.4	71.7	246.9
May	126.2	170.3	7.9	4.4	72.1	247.1
June	127.3	171.4	8.0	4.4	72.5	247.4
July	128.4	172.4	8.0	4.4	72.9	247.6
August	129.6	173.2	7.9	4.4	73.1	247.8
September	130.9	173.9	7.7	4.3	73.2	248.1
October	132.1	174.5	7.5	4.1	73.2	248.5
November	133.2	175.1	7.1	3.9	73.3	248.8
December	134.2	175.7	6.8	3.7	73.3	249.2

(a) Trend estimates for June 2002 to November 2002 have been revised. Estimates for the most recent three months may be subject to significant revisions as data for later months become available.

EXPLANATORY NOTES

INTRODUCTION

1 This publication contains preliminary estimates of the civilian labour force derived from the Labour Force Survey component of the monthly population survey. Estimates for the current month are preliminary and subject to revision. Revised estimates for the current month and more detailed estimates will be published in *Labour Force, Australia* (cat. no. 6203.0).

CONCEPTS, SOURCES AND METHODS

2 The conceptual framework used in Australia's Labour Force Survey aligns closely with the standards and guidelines set out in Resolutions of the International Conference of Labour Statisticians. Descriptions of the underlying concepts and structure of Australia's labour force statistics, and the sources and methods used in compiling the estimates, are presented in *Labour Statistics: Concepts, Sources and Methods* (cat. no. 6102.0) which is also available on the ABS website <<http://www.abs.gov.au>> (About Statistics—Concepts and Classifications).

MONTHLY POPULATION SURVEY

3 The monthly population survey is based on a multi-stage area sample of private dwellings (currently about 30,000 houses, flats, etc.) and a list sample of non-private dwellings (hotels, motels, etc.), and covers about 0.45% of the population of Australia. The information is obtained from the occupants of selected dwellings by specially trained interviewers. The information obtained relates to the week before the interview (i.e. the reference week).

4 Households selected for the Labour Force Survey are interviewed each month for 8 months, with one eighth of the sample being replaced each month. The first interview is conducted face-to-face. Subsequent interviews are conducted by telephone (if acceptable to the respondent).

5 The interviews are generally conducted during the two weeks beginning on the Monday between the 6th and 12th of each month. Each year, to deal with operational difficulties involved with collecting and processing the Labour Force Survey around the Christmas and New Year holiday period, interviews for December start four weeks after November interviews start, and January interviews start five weeks after December interviews start. Occasionally, circumstances that present significant operational difficulties for survey collection can result in a change to the normal pattern for the start of interviewing.

6 Estimates from the Labour Force Survey are published first in this publication 31 days after the commencement of interviews for that month, with the exception of estimates for each December which are published 38 days after the commencement of interviews.

SCOPE OF SURVEY

7 The Labour Force Survey includes all persons aged 15 and over except members of the permanent defence forces, certain diplomatic personnel of overseas governments customarily excluded from census and estimated population counts, overseas residents in Australia, and members of non-Australian defence forces (and their dependants) stationed in Australia.

COVERAGE

8 In the Labour Force Survey, coverage rules are applied which aim to ensure that each person is associated with only one dwelling, and hence has only one chance of selection. The coverage rules are necessarily a balance between theoretical and operational considerations. Nevertheless, the chance of a person being enumerated at two separate dwellings in the survey is considered to be negligible.

EXPLANATORY NOTES

POPULATION BENCHMARKS

9 Labour Force Survey estimates are calculated in such a way as to add up to independent estimates of the civilian population aged 15 and over (population benchmarks). From February 1999, labour force estimates have been compiled using benchmarks based on the results of the 1996 Census of Population and Housing. Small revisions were made to many of the historical estimates from January 1995 to January 1999.

COMPARABILITY OF SERIES

10 From April 1986, the definition of employed persons was changed to include persons who worked without pay between 1 and 14 hours per week in a family business or on a farm (i.e. contributing family workers). For further information, see paragraphs 36 and 37 of the Explanatory Notes to the February 1987 issue of *Labour Force, Australia* (cat. no. 6203.0).

11 The ABS introduced telephone interviewing into the Labour Force Survey in August 1996. Implementation was phased in for each new sample group from August 1996 to February 1997. During the period of implementation, the new method produced different estimates than would have been obtained under the old methodology. The effect dissipated over the final months of implementation and was no longer discernible from February 1997. The estimates for February 1997 and onwards are directly comparable to estimates for periods prior to August 1996. For further details, see the feature article in the June 1997 issue of *Labour Force, Australia* (cat. no. 6203.0).

12 From April 2001 the Labour Force Survey has been conducted using a redesigned questionnaire containing additional data items and some minor definitional changes. Core labour force series were revised for the period April 1986 to March 2001 to ensure continuity. For further details, see *Information Paper: Implementing the Redesigned Labour Force Survey Questionnaire* (cat. no. 6295.0) and *Information Paper: Questionnaires Used in the Labour Force Survey* (cat. no. 6232.0).

SURVEY SAMPLE REDESIGN

13 The Labour Force Survey sample was last reselected using information collected in the 2001 Census of Population and Housing.

14 The bulk of the new sample is being phased in over the period November 2002 to June 2003, with one eighth of this portion of the sample being introduced every month. The remainder of the sample (about 18% of the total), which covers less settled areas of Australia and non-private dwellings, was rotated in full for New South Wales, Victoria, Tasmania, Northern Territory and Australian Capital Territory in November 2002, and for Queensland, South Australia and Western Australia in December 2002. Such a pattern of implementation means that any changes to labour force estimates due to differences between the two samples, or any other influences, will be spread over the eight months.

15 For further details, see *Information Paper: Labour Force Survey Sample Design* (cat. no. 6269.0).

EXPLANATORY NOTES

RELIABILITY OF ESTIMATES

16 Two types of error are possible in an estimate based on a sample survey: sampling error and non-sampling error.

Sampling error occurs because a sample, rather than the entire population, is surveyed. One measure of the likely difference resulting from not including all dwellings in the survey is given by the standard error. There are about two chances in three that a sample estimate will differ by less than one standard error from the figure that would have been obtained if all dwellings had been included in the survey, and about nineteen chances in twenty that the difference will be less than two standard errors. Standard errors of estimates for the latest month and of estimates of movements since the previous month are shown on pages 31 and 32. Standard errors of other estimates and other movements may be determined by using information in the Technical Notes in *Labour Force, Australia* (cat. no. 6203.0).

Non sampling error arises from inaccuracies in collecting, recording and processing the data. Every effort is made to minimise reporting error by the careful design of questionnaires, intensive training and supervision of interviewers, and efficient data processing procedures.

SEASONAL ADJUSTMENT AND TREND ESTIMATION

17 Seasonally adjusted series are published in Tables 2, 5 and 12 to 17. Seasonal factors are reviewed annually to take account of each additional year's original data. The results of the latest review were used to compile the seasonally adjusted and trend estimates given in this publication. Information about the last annual review of seasonal factors was published in a feature article in the February 2002 issue of *Labour Force, Australia* (cat no. 6203.0).

18 Seasonal adjustment is a means of removing the estimated effects of normal seasonal variation from the series so that the effects of other influences on the series can be more clearly recognised. Seasonal adjustment does not aim to remove the irregular or non-seasonal influences which may be present in any particular month. This means that month-to-month movements of the seasonally adjusted estimates may not be reliable indicators of trend behaviour. For example, irregular factors unrelated to the trend account for more than half the seasonally adjusted movement with the following frequency:

- Employment: 6 in 10 monthly movements
- Unemployment: 8 in 10 monthly movements
- Unemployment rate: 8 in 10 monthly movements
- Participation rate: 9 in 10 monthly movements.

19 The smoothing of seasonally adjusted series reduces the impact of the irregular component of the seasonally adjusted series, and creates trend estimates. These trend estimates are derived by applying a 13-term Henderson-weighted moving average to all months except the last six. The last six monthly trend estimates are obtained by applying surrogates of the Henderson average to the seasonally adjusted series. Trend series are used to analyse the underlying behaviour of the series over time. These are published in tables 3, 6 and 12 to 19.

20 While this smoothing technique enables estimates to be produced for the latest month, it does result in revisions to the most recent months as additional observations become available. Generally, subsequent revisions become smaller, and after three months have a negligible impact on the series. There will also be revisions as a result of the annual review of seasonal factors.

EXPLANATORY NOTES

SEASONAL ADJUSTMENT AND TREND ESTIMATION *continued*

21 Trend estimates are published for the Northern Territory in table 18 and for the Australian Capital Territory in table 19. Unadjusted series for the two Territories have shown, historically, a high degree of variability, which can lead to considerable revisions to the seasonally adjusted estimates after each annual seasonal factor re-analysis. Seasonally adjusted estimates are not currently published for the two Territories. The most recent six months trend estimates are subject to revision. For the three most recent months, the revision may be relatively large. Inferences about trends drawn from smoothed seasonally adjusted (trend) estimates for months earlier than the latest three months are unlikely to be affected by month to month revisions. They may be affected by revision resulting from the annual re-analysis of seasonal factors.

22 For further information, see *A Guide to Interpreting Time Series—Monitoring 'Trends': an Overview* (cat. no. 1348.0) or contact the Assistant Director, Time Series Analysis on (02) 6252 6345.

RELATED PUBLICATIONS

23 Users may also wish to refer to *Labour Force, Australia* (cat. no. 6203.0). This publication contains a detailed list of related publications which are available from ABS Bookshops.

24 ABS Information about the labour market can be found on the Labour theme page on the ABS web site <<http://www.abs.gov.au>> (Themes—People, Labour).

25 Current publications and other products released by the ABS are listed in the *Catalogue of Publications and Products* (cat. no. 1101.0). The Catalogue is available from any ABS office or the ABS web site <<http://www.abs.gov.au>> (Products and Services). The ABS also issues a daily Release Advice on the web site (Information on Releases) which details products to be released in the week ahead.

DATA AVAILABLE ON REQUEST

26 As well as the statistics included in this and related publications, the ABS may have other relevant data available. Inquiries should be made to Marjory Smith on 02 6252 6525 or to any ABS office.

EFFECTS OF ROUNDING

27 Estimates have been rounded and discrepancies may occur between sums of the component items and totals.

28 Estimates of movement shown in this publication are obtained by taking the difference of unrounded estimates. The movement estimate is then rounded to one decimal place. Therefore where a discrepancy occurs between the reported movement and the difference of the rounded estimates, the reported movement will be more accurate.

SYMBOLS AND OTHER USAGES

* subject to sampling variability too high for most practical uses. See the Technical Notes in cat. no. 6203.0 for more details.

.. not applicable

r revised

pts percentage points

G L O S S A R Y

Actively looking for work	Includes writing, telephoning or applying in person to an employer for work; answering an advertisement for a job; checking factory noticeboards or the touchscreens at the Centrelink offices; being registered with Centrelink as a jobseeker; checking or registering with any other employment agency; advertising or tendering for work; and contacting friends or relatives.
Attending school	Persons aged 15 to 19 years enrolled at secondary or high school in the reference week.
Attending tertiary educational institution full time	Persons aged 15 to 24 years enrolled full time at a TAFE college, university, or other educational institution in the reference week, except those persons aged 15 to 19 years who were still attending school.
Civilian population aged 15 years and over	All usual residents of Australia aged 15 years and over except members of the permanent defence forces, certain diplomatic personnel of overseas governments customarily excluded from census and estimated population counts, overseas residents in Australia, and members of non-Australian defence forces (and their dependants) stationed in Australia.
Employed	All persons aged 15 years and over who, during the reference week: <ul style="list-style-type: none">■ worked for one hour or more for pay, profit, commission or payment in kind in a job or business, or on a farm (comprising employees, employers and own account workers); or■ worked for one hour or more without pay in a family business or on a farm (i.e. contributing family workers); or■ were employees who had a job but were not at work and were:<ul style="list-style-type: none">■ away from work for less than four weeks up to the end of the reference week; or■ away from work for more than four weeks up to the end of the reference week and received pay for some or all of the four week period to the end of the reference week; or■ away from work as a standard work or shift arrangement; or■ on strike or locked out; or■ on workers' compensation and expected to return to their job; or■ were employers or own account workers, who had a job, business or farm, but were not at work.
Full-time workers	Employed persons who usually worked 35 hours or more a week (in all jobs) and those who, although usually working less than 35 hours a week, worked 35 hours or more during the reference week.
Labour force	For any group, persons who were employed or unemployed, as defined.
Labour force status	A classification of the civilian population aged 15 years and over into employed, unemployed or not in the labour force, as defined. The definitions conform closely to the international standard definitions adopted by the International Conferences of Labour Statisticians.
Not in the labour force	Persons who were not in the categories employed or unemployed as defined.
Participation rate	For any group, the labour force expressed as a percentage of the civilian population aged 15 years and over in the same group.
Part-time workers	Employed persons who usually worked less than 35 hours a week (in all jobs) and either did so during the reference week, or were not at work in the reference week.

G L O S S A R Y

Seasonally adjusted series	A time series of estimates with the estimated effects of normal seasonal variation removed. See Explanatory Notes 17 and 18 for more detail.
Trend series	A smoothed seasonally adjusted series of estimates. See Explanatory Notes 19 to 21 for more detail.
Unemployed	Persons aged 15 years and over who were not employed during the reference week, and: <ul style="list-style-type: none">■ had actively looked for full-time or part-time work at any time in the four weeks up to the end of the reference week and:<ul style="list-style-type: none">■ were available for work in the reference week; or■ were waiting to start a new job within four weeks from the end of the reference week and could have started in the reference week if the job had been available then.
Unemployed looking for full-time work	Unemployed persons who: <ul style="list-style-type: none">■ actively looked for full-time work and were available for work in the reference week; or■ actively looked for work and were not available for work in the reference week because they were waiting to start a new full-time job.
Unemployed looking for part-time work	Unemployed persons who: <ul style="list-style-type: none">■ actively looked for part-time work only and were available for work in the reference week; or■ actively looked for work and were not available for work in the reference week because they were waiting to start a new part-time job.
Unemployment rate	For any group, the number of unemployed persons expressed as a percentage of the labour force in the same group.
Unemployment to population ratio	For any group, the number of unemployed persons expressed as a percentage of the civilian population in the same group.

STANDARD ERRORS

The estimates in this publication are based on information gained from the occupants of a sample survey of dwellings. Because the entire population is not surveyed, the published estimates are subject to sampling error. The most common way of quantifying such sampling error is to calculate the standard error for the published estimate or statistic.

LEVEL ESTIMATES

To illustrate, let us say the published level estimate for employed persons aged 15 to 19 is 500,000. The calculated standard error in this case is 8,700. The standard error is then used to interpret the level estimate of 500,000. For instance, the standard error of 8,700 indicates that:

- There are approximately two chances in three that the real value falls within the range 491,300 to 508,700 (500,000 + or - 8,700)
- There are approximately nineteen chances in twenty that the real value falls within the range 482,600 to 517,400 (500,000 + or - 17,400).

The real value in this case is the result we would obtain if we could enumerate the total population.

The following tables show the standard errors for this month's level estimates.

	EMPLOYED.....			UNEMPLOYED.....			Labour force	Not in labour force	Unemployment rate	Participation rate
	Full time	Part time	Total	Looking for f/t work	Looking for p/t work	Total				
	'000	'000	'000	'000	'000	'000				
NSW	18.8	10.7	22.7	5.3	3.6	5.8	23.7	16.7	0.2	0.4
Vic.	14.3	8.8	17.2	4.0	2.8	4.5	17.8	12.6	0.2	0.4
Qld	11.0	7.8	12.5	3.9	2.8	4.5	12.9	10.0	0.2	0.4
SA	5.1	3.6	5.9	1.7	1.1	1.9	6.0	5.0	0.3	0.5
WA	5.5	4.2	6.1	2.1	1.5	2.4	6.3	4.9	0.2	0.4
Tas.	1.9	1.4	2.1	0.8	0.5	0.9	2.2	1.9	0.4	0.6
NT	1.3	0.8	1.4	0.4	0.3	0.5	1.4	1.0	0.5	1.0
ACT	1.9	1.1	2.1	0.4	0.3	0.5	2.1	1.3	0.3	0.9
Males	21.7	10.3	24.0	7.0	4.1	7.6	25.1	15.3	0.1	0.3
Females	16.0	14.7	20.9	5.8	4.7	6.9	21.7	18.8	0.2	0.3
Persons	29.0	16.9	38.7	8.4	5.7	9.5	41.2	24.6	0.1	0.3

	NUMBER OF UNEMPLOYED PERSONS.....					UNEMPLOYMENT RATE.....				
	Aged 15-19 looking for f/t work	Aged 20 and over looking for f/t work	Total looking for f/t work	Looking for p/t work	Total	Aged 15-19 looking for f/t work	Aged 20 and over looking for f/t work	Total looking for f/t work	Looking for p/t work	Total
	'000	'000	'000	'000	'000	pts	pts	pts	pts	pts
NSW	2.8	5.0	5.3	3.6	5.8	2.7	0.2	0.2	0.4	0.2
Vic.	2.0	3.8	4.0	2.8	4.5	2.8	0.2	0.2	0.4	0.2
Qld	1.9	3.6	3.9	2.8	4.5	2.6	0.3	0.3	0.5	0.2
SA	0.8	1.6	1.7	1.1	1.9	3.3	0.3	0.3	0.5	0.3
WA	1.0	2.0	2.1	1.5	2.4	2.8	0.3	0.3	0.5	0.2
Tas.	0.4	0.8	0.8	0.5	0.9	4.5	0.5	0.5	0.8	0.4
NT	0.3	0.4	0.4	0.3	0.5	7.0	0.5	0.6	1.3	0.5
ACT	0.2	0.4	0.4	0.3	0.5	5.3	0.3	0.3	0.7	0.3
Males	3.5	6.6	7.0	4.1	7.6	1.7	0.1	0.1	0.5	0.1
Females	2.8	5.5	5.8	4.7	6.9	2.4	0.2	0.2	0.2	0.2
Persons	4.2	7.9	8.4	5.7	9.5	1.3	0.1	0.1	0.2	0.1

STANDARD ERRORS *continued*

MOVEMENT ESTIMATES

The following example illustrates how to use the standard error to interpret a movement estimate. Let us say that one month the published level estimate for females employed part time in Australia is 1,390,000; the next month the published level estimate is 1,400,000. The calculated standard error for the movement estimate is 13,000. The standard error is then used to interpret the published movement estimate of 10,000. For instance, the standard error of 13,000 indicates that:

- There are approximately two chances in three that the real movement over the two month period falls within the range -3,000 to 23,000 (10,000 + or - 13,000)
- There are approximately nineteen chances in twenty that the real movement falls within the range -16,000 to 36,000 (10,000 + or - 26,000).

The following tables show the standard errors for this month's movement estimates.

	EMPLOYED.....			UNEMPLOYED.....			Labour force	Not in labour force	Unemployment rate	Participation rate
	Full time	Part time	Total	Looking for f/t work	Looking for p/t work	Total				
	'000	'000	'000	'000	'000	'000				
NSW	10.6	7.5	11.7	4.3	2.8	4.6	12.0	10.0	0.1	0.2
Vic.	8.0	5.8	9.0	3.1	2.2	3.4	9.2	7.5	0.1	0.2
Qld	7.3	5.4	8.3	3.0	2.2	3.4	8.5	6.8	0.2	0.3
SA	3.4	2.5	3.8	1.3	0.9	1.4	3.9	3.3	0.2	0.3
WA	4.2	3.2	4.7	1.7	1.3	1.9	4.8	3.8	0.2	0.3
Tas.	1.3	1.0	1.5	0.6	0.4	0.7	1.5	1.3	0.3	0.4
NT	1.2	0.8	1.4	0.4	0.3	0.5	1.4	0.9	0.5	1.0
ACT	1.1	0.7	1.2	0.4	0.3	0.4	1.2	0.8	0.2	0.5
Males	15.0	8.0	15.9	5.6	3.4	6.1	16.2	11.6	0.1	0.2
Females	11.9	11.0	14.7	4.7	3.8	5.5	15.0	13.7	0.1	0.2
Persons	17.4	12.5	19.6	6.7	4.6	7.4	20.0	16.3	0.1	0.1

	NUMBER OF UNEMPLOYED PERSONS.....					UNEMPLOYMENT RATE.....				
	Aged 15-19 looking for f/t work	Aged 20 and over looking for f/t work	Total looking for f/t work	Looking for p/t work	Total	Aged 15-19 looking for f/t work	Aged 20 and over looking for f/t work	Total looking for f/t work	Looking for p/t work	Total
	'000	'000	'000	'000	'000	pts	pts	pts	pts	pts
NSW	2.3	4.0	4.3	2.8	4.6	2.2	0.2	0.2	0.3	0.1
Vic.	1.6	2.9	3.1	2.2	3.4	2.5	0.2	0.2	0.3	0.1
Qld	1.7	2.8	3.0	2.2	3.4	2.2	0.2	0.2	0.4	0.2
SA	0.7	1.2	1.3	0.9	1.4	2.7	0.3	0.3	0.4	0.2
WA	0.9	1.6	1.7	1.3	1.9	2.9	0.2	0.2	0.4	0.2
Tas.	0.3	0.6	0.6	0.4	0.7	3.7	0.4	0.4	0.6	0.3
NT	0.2	0.4	0.4	0.3	0.5	6.5	0.5	0.5	1.2	0.5
ACT	0.2	0.3	0.4	0.3	0.4	5.7	0.3	0.3	0.6	0.2
Males	2.9	5.3	5.6	3.4	6.1	1.4	0.1	0.1	0.4	0.1
Females	2.5	4.4	4.7	3.8	5.5	2.2	0.2	0.2	0.2	0.1
Persons	3.5	6.3	6.7	4.6	7.4	1.1	0.1	0.1	0.2	0.1

WHAT IF...? REVISIONS TO TREND ESTIMATES

EFFECT OF NEW SEASONALLY ADJUSTED ESTIMATES ON TREND ESTIMATES

Each time new seasonally adjusted estimates become available, trend estimates are revised (see paragraphs 19 and 20 of Explanatory Notes).

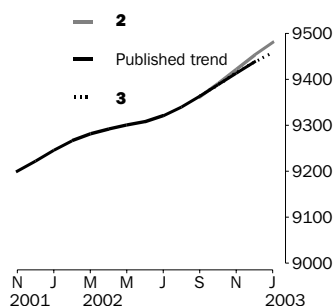
TREND REVISIONS

The examples in the tables below show four illustrative scenarios and the consequent revisions to previous trend estimates of employment and unemployment rate.

- 1** The January seasonally adjusted estimate is the same as the December estimate.
- 2** The January seasonally adjusted estimate is higher than the December estimate by:
 - +0.30% for employment
 - +1.88% for the unemployment rate
- 3** The January seasonally adjusted estimate is lower than the December estimate by:
 - -0.30% for employment
 - -1.88% for the unemployment rate
- 4** The January seasonally adjusted estimate results in a revised December trend estimate which is identical to the new January trend estimate.

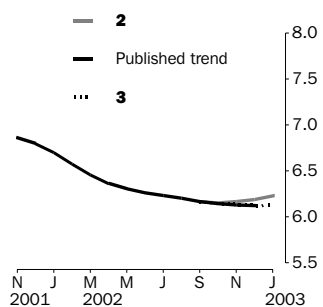
The percentage changes of 0.30% and 1.88% were chosen because they represent the average absolute monthly percentage changes in employment and the unemployment rate respectively.

EMPLOYMENT ('000)



		WHAT IF NEXT MONTH'S SEASONALLY ADJUSTED ESTIMATE IS:			
		1	2	3	4
		9 475.6	9 504.1	9 447.2	9 303.9
		<i>i.e. the same as Dec 2002</i>	<i>i.e. rises by 0.30%</i>	<i>i.e. falls by 0.30%</i>	<i>i.e. same trend for Dec & Jan</i>
TREND AS PUBLISHED					
2002	October	9 389.6	9 390.8	9 392.0	9 389.5
	November	9 414.7	9 419.1	9 423.3	9 414.9
	December	9 438.6	9 446.3	9 454.2	9 438.4
	January (new)	—	9 470.7	9 482.7	9 458.7

UNEMPLOYMENT RATE (%)



		WHAT IF NEXT MONTH'S SEASONALLY ADJUSTED ESTIMATE IS:			
		1	2	3	4
		6.2	6.3	6.1	6.0
		<i>i.e. the same as Dec 2002</i>	<i>i.e. rises by 1.88%</i>	<i>i.e. falls by 1.88%</i>	<i>i.e. same trend for Dec & Jan</i>
TREND AS PUBLISHED					
2002	October	6.1	6.2	6.2	6.1
	November	6.1	6.2	6.2	6.1
	December	6.1	6.2	6.2	6.1
	January (new)	—	6.2	6.2	6.1

FOR MORE INFORMATION...

- INTERNET* **www.abs.gov.au** the ABS web site is the best place to start for access to summary data from our latest publications, information about the ABS, advice about upcoming releases, our catalogue, and Australia Now—a statistical profile.
- LIBRARY* A range of ABS publications is available from public and tertiary libraries Australia-wide. Contact your nearest library to determine whether it has the ABS statistics you require, or visit our web site for a list of libraries.
- CPI INFOLINE* For current and historical Consumer Price Index data, call 1902 981 074 (call cost 77c per minute).
- DIAL-A-STATISTIC* For the latest figures for National Accounts, Balance of Payments, Labour Force, Average Weekly Earnings, Estimated Resident Population and the Consumer Price Index call 1900 986 400 (call cost 77c per minute).

INFORMATION SERVICE

Data which have been published and can be provided within five minutes are free of charge. Our information consultants can also help you to access the full range of ABS information—ABS user-pays services can be tailored to your needs, time frame and budget. Publications may be purchased. Specialists are on hand to help you with analytical or methodological advice.

- PHONE* **1300 135 070**
- EMAIL* **client.services@abs.gov.au**
- FAX* 1300 135 211
- POST* Client Services, ABS, GPO Box 796, Sydney 2001

WHY NOT SUBSCRIBE?

ABS subscription services provide regular, convenient and prompt deliveries of ABS publications and products as they are released. Email delivery of monthly and quarterly publications is available.

- PHONE* 1300 366 323
- EMAIL* subscriptions@abs.gov.au
- FAX* 03 9615 7848
- POST* Subscription Services, ABS, GPO Box 2796Y, Melbourne 3001



2620200012023
ISSN 1031-038X

RRP \$22.00